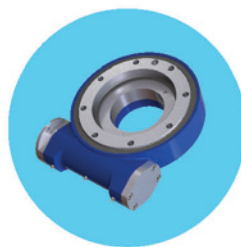


Since 1990

# Hydraulic Component



Woori Enterprise are endeavoring to provide  
high quality products and services to our customers as  
'honesty and sincerity', 'enterprise for customers'  
and 'enterprise with customers'.





# Company Information

WOORI ENTERPRISE CO., LTD. is the leading distributor of hydraulic components such as motor, cooler, valve, slewing, pumps, filter, coupling in South Korea. By partnering with top brands such as M+S, EMMERGI, Walvoil, CASSAPA, H-Fang and many more, we can supply a broad range suitable, especially for construction equipment, mobile, agriculture machine, earth drilling etc.



## History

- 1990**    Founded WOORI ENTERPRISE
- 1993**    Sol-agent contract with M+S Hydraulic.
- 1993**    Sol-agent contract with EMMERGI S.R.L
- 1994**    Sales started HYDROCONTRL valve.
- 2010**    Sales started STUCCHI coupling.
- 2011**    Sales started WALVOIL valve.
- 2012**    Branch office open at Cheonan.
- 2017**    Expansion of factory building and for moving.



# Main Partners



[www.ms-hydraulic.com](http://www.ms-hydraulic.com)

M+S Hydraulic is a leading manufacturer of hydraulic motors, steering units, valves, brakes and accessories. The company is ISO 9001:2000 certified by TUV for guaranteeing quality production and high technology rank all over the world.

M+S Hydraulic pursues one goal only - customer satisfaction with highest quality, lowest possible prices and the best service. Everyone in the company's staff is motivated to manufacture quality products in order to meet your needs and expectations as a customer.

## Hydraulic motors (Type : MM, MP, MR, MH) & Heavy Duty Motors (Type : MM, MP, MR, MH)



## Hydraulic Brakes Motors Brakes (Type : SW, LB, MTM, BMR) & Valve Blocks (Type : KP)



## Hydraulic Steering Units & Accessories (Type : HKU, HKUS, UVM, XY)







[www.emmegi.com](http://www.emmegi.com)

Aluminum Bar & Plate construction is the most advanced heavy duty technology available today. This design has several significant features : Compact Performance : Up to 50% smaller than traditional fin & tube construction. Rugged Construction: 1/4" Thick bars protect the fluid channels from damage. Serviceable: Bars extend to fin edges allowing high pressure washing. Non-Louvered Air Fins : resist fouling.

### Seambiatori Aria-olio Serie MG AIR (Air-oil heat-exchangers MG-AIR Series)



emmegi-HPA-air-to-oil-heat-exchangers



AC-Fan-Driven-Coolers-R111



Combi engines



MG Seires Water / Oil



emmegi-heat-exchangers-prodcuts

# Main Partners



[www.walvoil.com](http://www.walvoil.com)





## Featured Products

**CASAPPA**  
FLUID POWER DESIGN



**SHIMADZU**

**caproni**

[www.casappa.com](http://www.casappa.com)



# Main Partners



[www.argo-hytos.com](http://www.argo-hytos.com)



[www.ufihyd.com](http://www.ufihyd.com)





## Featured Products



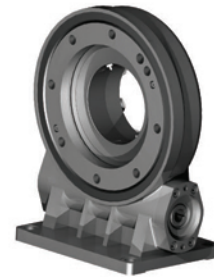
[www.conedrive.com](http://www.conedrive.com)



Series SE/PE Slew Drive



Series SEA/PEA Slew Drive



Series VE/PE Slew Drive



Series SDE/PDE Slew Drive



Series W Slew Drive



Series WE Slew Drive



Series WEA Slew Drive



Series SE-2 Slew Drive



Series S Slew Drive



Series HSE Slew Drive



Rotation Drive



Cone Drive

# Main Partners



[www.stucchiaustralia.com](http://www.stucchiaustralia.com)



A Series quick Couplings



FIRG Series Quick Couplings



DP Series Multi Couplings



[www.luen.it](http://www.luen.it)



Counterbalance Valve  
with Cartridge



Pressure Relief Valve  
with Cartridge



Sequence Valve  
with Cartridge

## Power pack

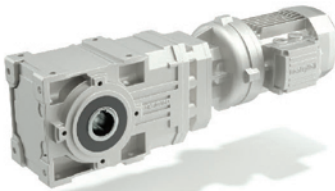




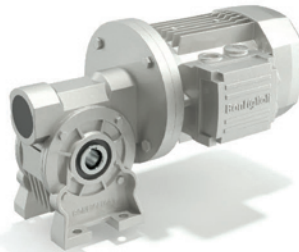
## Featured Products



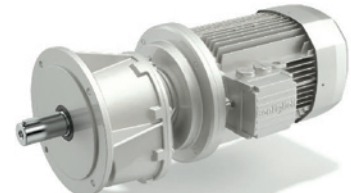
[www.bonfiglioli.com](http://www.bonfiglioli.com)



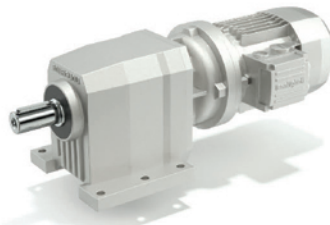
A Series  
RIGHT-ANGLE GEAR UNITS



VF/W Series  
RIGHT-ANGLE GEAR UNITS



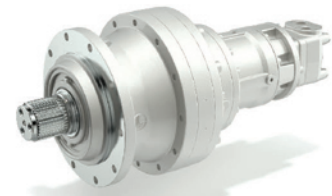
AS Series  
IN-LINE GEARED UNITS



C Series  
IN-LINE GEARED UNITS



F Series  
PARALLEL SHAFT GEARMOTORS



S Series  
PARALLEL SHAFT GEARMOTORS



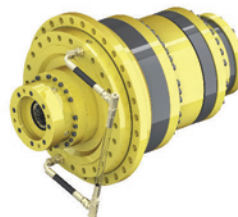
[www.dinamicoil.com](http://www.dinamicoil.com)



Winch drives



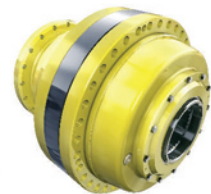
Winch drives



Winch drives



Winch drives



Winch drives



[www.saispa.com](http://www.saispa.com)



Variable displacement motors



Fixed displacement motors



Double displacement motor

# Product Applications





## Construction Machine & Concrete Pump Car





# Product Applications

## Agricult Machine



## Skid steer loader



## High Place Operation Car





## Earth Drilling Machine





## WOORI ENTERPRISE CO., LTD

**Head Office** 133-3, Gamjeon-Dong, Sasang, Busan, South Korea (Postal Code: 46984)

**Branch Office** 1413 177-10, Gwangjang-ro, Baebang-eup, Asan-si, Chungcheongnam-do, South Korea

TEL +82-51-324-7500 | FAX +82-51-324-7510 | E-mail [woori@woorienterprise.com](mailto:woori@woorienterprise.com)

[www.woorienterprise.com](http://www.woorienterprise.com)

