



Nominated as an Excellent Coupler Business Company by Korea Construction Equipment Safety Institute, and covered by Product-Liability Insurance.



#### LINE-UP

TILT ROTATOR • ROTATING QUICK COUPLER • TILT QUICK COUPLER • BUCKET STONE GRAB • SMART GRAPPLE • SAFETY COUPLER  
BREAKER • RIPPER • COMPACTOR • STONE GRAB - ROTATING TYPE • STONE GRAB II (FIXED TYPE) • WOOD GRAPPLE •  
ORANGE GRAPPLE • QUICK-COUPLER • VIBRO GRAB • SQUARE MOWER • CIRCULAR MOWER • II PIN BUCKET • III PIN BUCKET • LIFTING FORK

JK JK CO., Ltd.

Head office : 3B, 17L, Banwol-Industrial Complex, 395-4,  
Mongnae-dong, Danwon-gu, Ansan-si, Gyeonggi-do, R.O.K.  
TEL : +82-31-494-1926~7 FAX : +82-31-495-1927

www.jkattach.co.kr

Contact



JK TOTAL  
ATTACHMENT





# WORLDWIDE HIGH BRAND JK Attachment

JK is a future business dreaming a growth to worldwide high brand for bridging heart moving emotions to customers in the world.

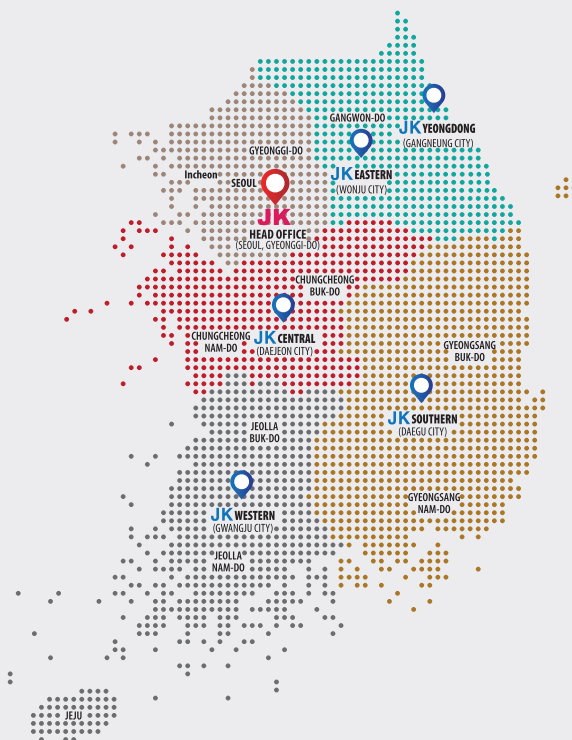
Future-oriented company is dynamic and can play a leading role for the next generation, we think.  
JK is doing his best with passion to be a leader of new generation on Total Attachment for excavator.

JK has been a leading customer protection through our "Satisfaction Guaranteed System" responsible for the products which were sold.

JK is young enterprise but possesses a strong power with 20 years of experience in the Total Attachment Industry, which high technicians have been working.

So JK's product are the symbol of company pride as a masterpiece, that also are recognized from lots of customers and other companies in the same field.

## CUSTOMER SUPPORT CENTER NETWORK



**JK Head office** (Seoul, Gyeonggi-do)  
TEL. 031-494-1927  
H.P. 010-9484-1927

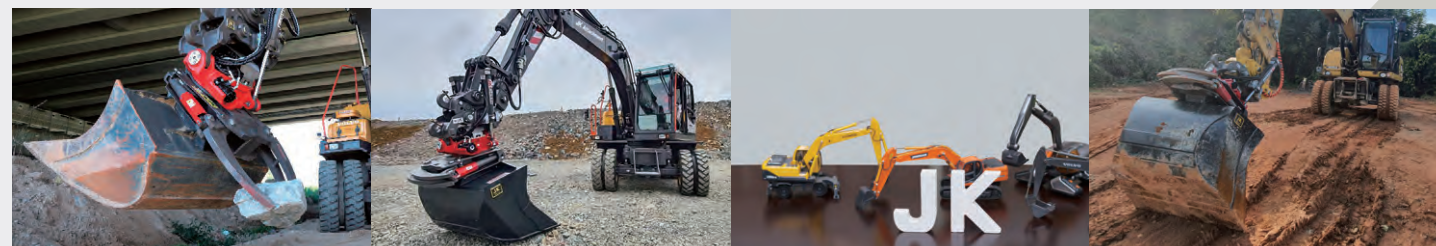
**JK Eastern** (Wonju City)  
TEL. 033-344-1927  
H.P. 010-9910-6955

**JK Western** (Gwangju City)  
TEL. 061-355-1927  
H.P. 010-9135-1927

**JK Central** (Daejeon City)  
TEL. 043-266-1927  
H.P. 010-4623-1927

**JK Southern** (Daegu City)  
TEL. 053-854-1927  
H.P. 010-8900-1927

**JK Yeongdong** (Gangneung CITY)  
TEL. 033-344-1927  
H.P. 010-9910-6955



## HISTORY

### 2002

- Established "Jin Kyung Machinery Company (Vendor & Supplier)" as a manufacturer of Hydraulic Breakers & Industrial Machinery.

### 2007

- Developed a Quick Coupler of Pulling Type
- Developed a Chamber Bucket & Ripper for Excavator.
- Changed Company Name to "JK Industry Co., Ltd."
- Nominated as a Clean Workplace

### 2008

- Certified as an "Excellent Small & Medium Business Company" accomplished Management Reforms("A" Class, INNO-BIZ) by Small & Medium Business Administration.

### 2009

- Developed a Quick Coupler of Pushing Type.
- Developed a Compactor for Excavator
- Developed a Multi-Purpose Grab for Excavator.

### 2010

- Moved to New Factory at Banwol Industrial Complex.
- Developed a Lifting Fork for Excavator. • Acquired "Design Registration" of Screening Bucket from the Office of Patent Administration.
- Acquired "Design Registration" of Ripper equipped with Grab from the Office of Patent Administration. • Acquired "Design Registration" of Flat-Type Ripper from the Office of Patent Administration.
- Developed a Rotating Stone Grab for 5~7 ton class Excavator.
- Developed a Rotating Stone Grab for 10~12 ton class Excavator
- Acquired Certificate of Quality Management System ISO 9001.
- Acquired Certificate of Environmental Management System ISO 14001.
- Acquired "CE" Certificate • Acquired Patent of Bucket for Excavator from the Office of Patent Administration.
- Developed Rotating Stone Grab & Rotating Wood Grab

### 2011

- Nominated as an Export Promising Business Company by Small & Medium Business Administration.
- Nominated as a Promising Company by Gyeonggi Province, Korea. • Developed and launched Crusher for demolition & Shear

### 2013

- Launched Smart Grapple • Nominated as a Venture Company
- Established a Research Institute of Product Development

### 2014

- Developed and launched Perfect Grapple
- Awarded Prize of the Minister of Industry, Trades and Resources
- Developed and launched 06 class Perfect Grapple

### 2015

- Developed and launched Mower for Excavator
- Registered the Procurement in Government Offices

### 2016

- Developed and launched Perfect Grapple
- Registered the Procurement in Government Offices
- Developed and launched 03 class Perfect Grapple

### 2017

- Developed, launched and patented Rotating Quick Coupler
- Developed Attachment for Rotating Quick Coupler only

### 2018

- Developed and launched Five way Safety Quick Coupler
- Developed and supplying of Exclusive Switch for Safety Quick Coupler
- Developed and launched Tilt Bucket • Opened #2 Factory

### 2019

- Developed and launched Tilt Rotator (Patent applied at home and abroad)
- Developed Gap control device of Rotating Quick Coupler (Patent registration at home and abroad)

### 2020

- Developed Tilt Quick Coupler • Developed JK Joystick
- Developed JK PCS Control System

### 2021

- Tiltrotator steering system
- Conex Exhibition in KINTEX KOREA
- Developed the World type Tiltrotator





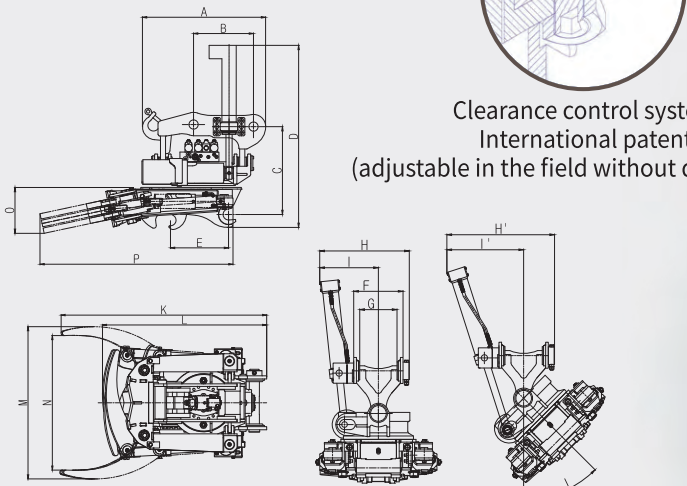
# JK TOTAL ATTACHMENT

## TILT ROTATOR

Easy to detach and mounting, easy to adjust clearance of gear play without disassembly, and perfect post-management

### Features

- Easy to detach and mounting   • Simplified structural change
- Stable grip angle.   • Smooth control system
- Can be used without modification of existing attachment
- Mounting gear clearance control device  
(obtained domestic & international patent)
- Ergonomic tilt-only joystick

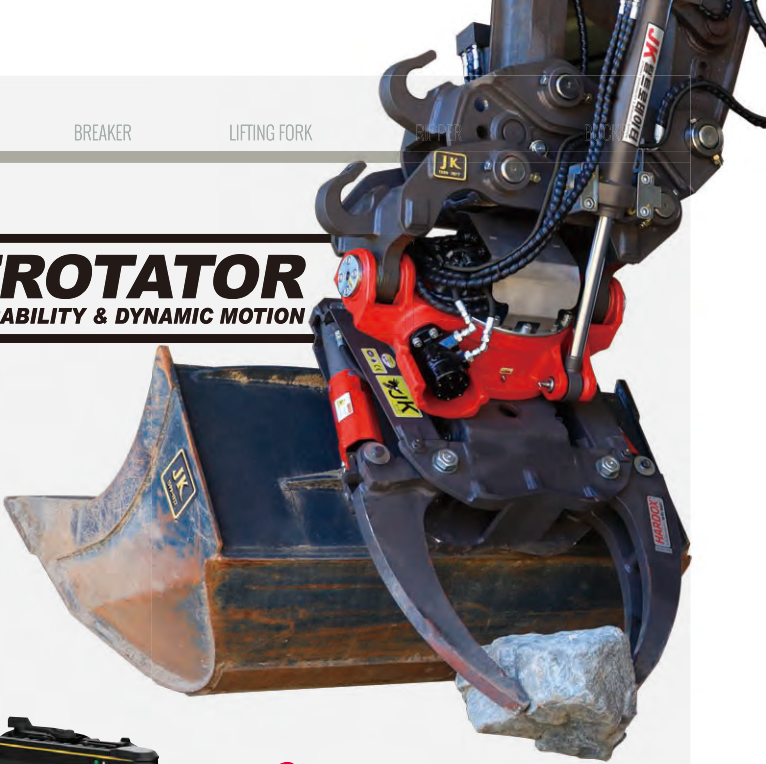


Model	A	B	C	D	E	F	G	H-H'
Unit	mm	mm	mm	mm	mm	mm	mm	mm
JKTR-K50	610	295	435	560	260~275(275~295)	220	175	400~480
JKTR-K140	867	420	545	1,170	280~400	275	348	707~905

Model	I-I'	J	K	L	M	N	O	P
Unit	mm	°	mm	mm	mm	mm	mm	mm
JKTR-K50	265~345	0°~45°	1,020	810	710	625	210	800
JKTR-K140	354~492	0°~45°	1,325	1,060	980	860	350	1,400

Model	Carrier	Working Pressure	Setting Pressure	Flow Rate	Hyd. Motor	Weight
Unit	ton	bar	bar	l/min	-	kg
JKTR-K50	5	180~220	250	30~50	MP160	230
JKTR-K140	11~14	180~220	250	90~120	MP200	640

※ The above specifications are subject to change for quality improvement. ※ Warranty : 2 years after purchase



◀ JKAQ Sliding type



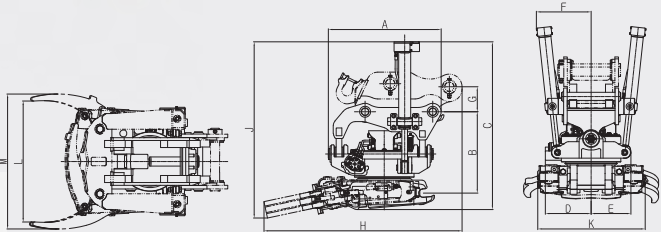
Smart construction with JK(MG / MC)



- Use of HARDOX steel  
\* Securing wear resistance



JK PCS Control system



Model	A	B	C	D	E	F
MODEL	mm	mm	mm	mm	mm	mm
JKTRQ140	800	577	1190	325	282	390~520

Model	G	H	J	K	L	M	Tilt
MODEL	mm	mm	mm	mm	mm	mm	°
JKTRQ140	180	1405	1250	762	860	960	2×45°

Model	Base machine Weight	Max. Hydraulic pressure	Hydraulic Flow	Weight
MODEL	ton	Mpa	l/low	kg
JKTRQ140	14~19	22	90~120	520

※ The above specifications are subject to change for quality improvement. ※ Warranty : 2 years after purchase



Auto-Quick Coupler



Be firm with the use of HARDOX steel material





# JK TOTAL ATTACHMENT

## ROTATING QUICK COUPLER

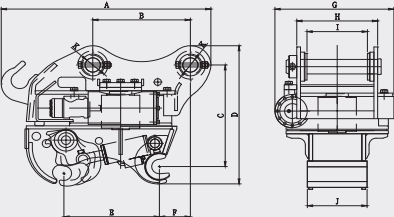
The height has fallen. Fixed grapple is rotated.  
A Surprising Cost Performance Ration is economical.

### Features

- Acquired “Design Registration” and patented.
- Patented the Shock absorb device of Rotating part.
- Manufactured with HARDOX special steel.
- Possible to tilt and blow the best by hyd. breaker.
- High durability / Boring machining after Welding work
- Possible to 360 degree grab-work of Bucket, Ripper, Fork, Hyd. Breaker, Compactor & Grapple.
- Possible to grab-work of lower link.

Safety clip  
(M22 thread, for 9~45 ton)

Greasing point  
(embedded)



Model	Carrier (ton)	Working Pressure (kg/cm <sup>2</sup> )	Setting Pressure (kg/cm <sup>2</sup> )	Flow Rate (l/min)	Hyd. Motor	Weight (kg)
JKRQ30	3~3.5	80~160	250	20~40	MP125	100
JKRQ50	4~6	110~180	250	30~50	MP160	150
JKRQ80	7~10	180~220	250	90~120	MP160	280
JKRQ140	9~13	180~220	250	90~120	MP250	380

Model	A	B	C	D	E	F	G	H	I	J	K
JKRQ30	525	210	364	454	185~195	70	340	179	142	132	Ø 40
JKRQ50	625	290	370	485	222~302	89	405	217	155~165	153~163	Ø 45
JKRQ80	715	305	413	555	105	249~310	456	264	175~195	175~195	Ø 45~Ø 65
JKRQ140	902	420	466	633	336~411	133	512	348	256~278	257~272	Ø 65

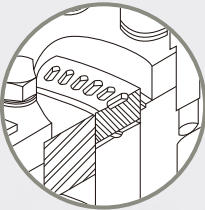
※ The above specifications are subject to change for quality improvement. ※ Warranty : 1 years after purchase



Strong with HARDOX, as free as wrist  
**JK 360° Rotating Q/C**

surface-treated by  
Induction Hardening Method  
(High Frequency Heat Treatment)  
& Coated (all models)

Using **HARDOX**  
\* special steel to secure  
the Torsional stiffness.



Clearance control system / International patent  
(adjustable in the field without disassembly)



**JK Rotating Quick Coupler-only joystick**  
Install a proportional control hydraulic line exclusively for rotating quick coupler.  
Install a proportional control hydraulic line exclusively for rotating quick coupler,  
which provides high flow rate, faster rotational speed and better power.

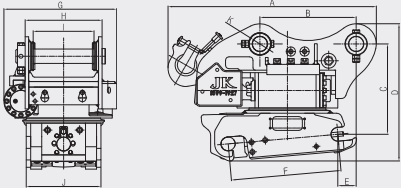


Be firm with the use of **HARDOX** steel material

Removable and  
attached type  
**JK Rotating  
Quick Coupler**



The removable and  
attached types allow  
for light general  
operation and increase  
the durability of the  
rotating quick coupler



RAQ(Rotating AUTO QUICK)

Model	A	B	C	D	E	F	G	H	I	J	k
모델	mm	mm	mm	mm	mm	mm	mm	mm	mm	mm	mm
JKRAQ140	908	420	394	600	80	480	510	348	278	338	65~70

※ The above specifications are subject to change for quality improvement. ※ Warranty : 1 years after purchase





JK TOTAL ATTACHMENT

Powertilt

Super powerful sustainable  
Tilting angle without gear clearance.

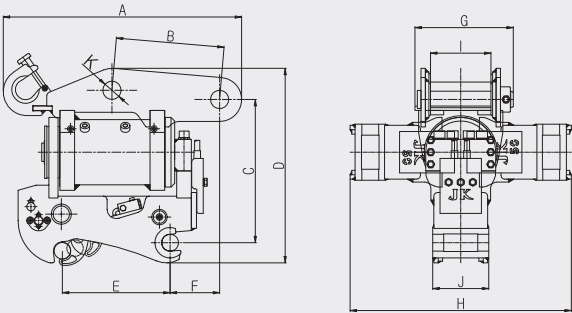
Features

- Equipped shock absorber for gear clearance
- Light weight and durability with HARDOX
- Lowest height in the class
- Work with precision
- For machines from 1.7 to 14tons
- Tilt any bucket or attachments up to 180 degrees
- Proven technology
- Add versatility to your machine
- Less machine repositioning
- Increase productivity by 50-70%
- Fully enclosed helical gear

Safety clip  
(M22 thread, for 9-45 ton)

Easy to control gear clearance

Tilt any bucket or attachments up to 180 degrees.  
(JKTQ140 up to 90 degrees)



Model	A (mm)	B (mm)	C (mm)	D (mm)	E (mm)	F (mm)	G (mm)	H (mm)	I (mm)	J (mm)	K (mm)	Carrier (ton)	Working pressure (bar)	Setting pressure (bar)	Oil flow (l/min)	Tilt angle (°)	Weight (kg)
JKTQ17	430~445	95~140	325	415	88~145	130~145	193	466	96~118	94~104	Ø30	1.7~2.0	110~180	180	3~5	180	50
JKTQ35	575	210	350	486	185~225	100	277	540	130~142	130	Ø35~40	2.5~4.0	110~180	210	4~10	180	83
JKTQ50	655	295	391	531	260~295	135	270	605	165	153	Ø45	4~6	110~180	210	8~14	180	145
JKTQ140	910	420	525	780	375~410	200	405	860	260~275	257	Ø65	10~15	110~180	210	25~35	130	310

※ The above specifications are subject to change for quality improvement



Be firm with the use of HARDOX steel material





# JK TOTAL ATTACHMENT

## Quick-Coupler (PULL TYPE)

Basic of Quick Coupler for excavator.

### Features

- Pro-longed lifetime with superior durability
- Secured space for safety pin
- Double safety device
- Simple detachment



### JK Pull Type (all models)

※ Pull Type : Has a limit of distance between pins but its durability is superior to Push type.

Specification	Model	JKQPL200	JKQPL300	JKQPL350	JKQPL400	JKQPL500
Carrier	ton	18~22	23~30	31~36	37~42	43~50
L	mm	970	1,076~1,094	1,057~1,072	1,208~1,238	1,253~1,285
H	mm	491	552~557	587~610	613~627	628~662
H1	mm	302	340	355~371	365~383	380~401
W	mm	477~496	535~584	586~624	624~664	661~726
W1	mm	306~334	351~411	385~432	401~443	431~473
W2	mm	303~329	347~407	382~429	429~438	429~468
B	mm	450~480	487~540	510~580	533~600	556~612
Weight	kg	330~340	510~528	630~636	670~755	760~890
Working Pressure	bar			40~350		
Required Flow Rate	lpm			10~30		

※ Above specification can be changed without prior notice to improve the performance. (warranty period - one year)



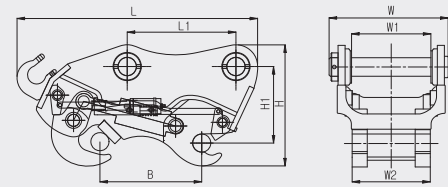
# JK TOTAL ATTACHMENT

## SAFETY QUICK-COUPLER

No safety accident / Work comfortably / Optimal JK Safety Quick Coupler equipped 5-safety lock devices.

### Features

- Longer end of Hook shape provide easy engaging and drop off in safe
- Body integrated safety device   • CE Certificate
- Immediate check of hitch engaging from inside cabin



### Link Pull Type

Model	Carrier (ton)	L (mm)	H (mm)	H1 (mm)	W (mm)	W1 (mm)	W2 (mm)	B (mm)	Weight (kg)	Working Pressure (bar)	Required Flow Rate (lpm)
JKQPLS140	12~17	890	390	260	393	260	257	380~400	150~210	40~350	10~30
JKQPLS200	18~22	995	525	325	496	330	328	450~475	340~410	40~350	10~30
JKQPLS300	23~30	1195	600	380	584	398	388	490~530	530~560	40~350	10~30
JKQPLS350	31~36	1250	630	390	585~645	385~440	382~438	490~530	630~670	40~350	10~30
JKQPLS400	37~42	1300	660	400	650~700	400~470	398~467	530~600	680~770	40~350	10~30
JKQPLS500	43~80	1350	700	450	660~750	430~500	427~498	550~650	790~1200	40~350	10~30

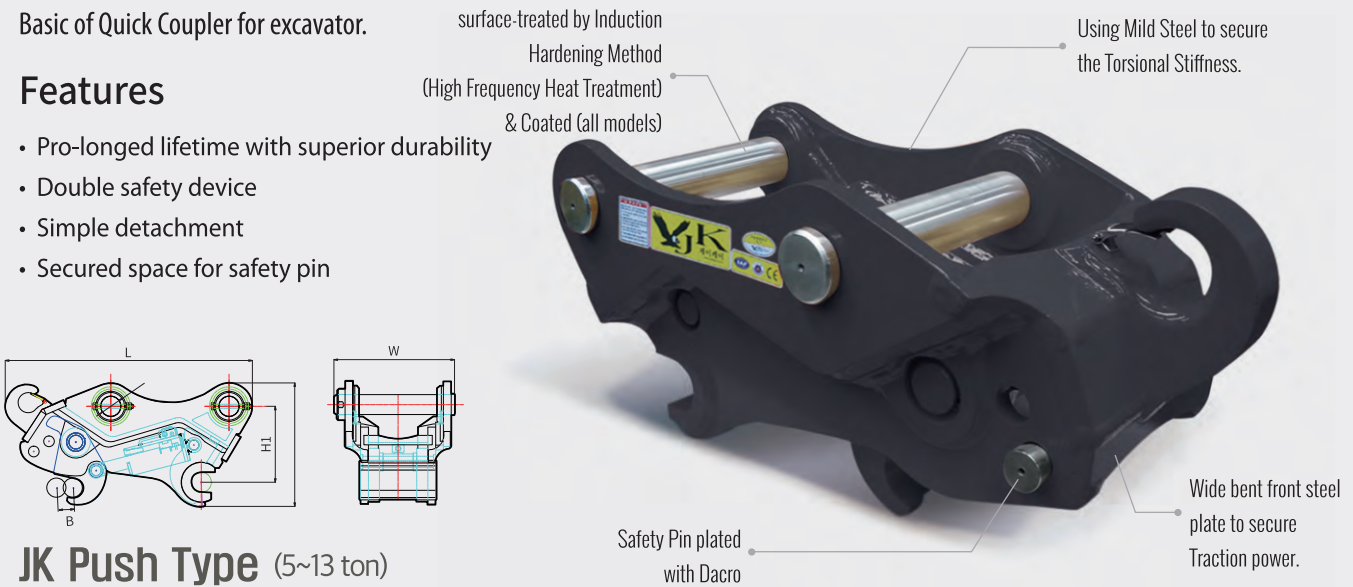
# JK TOTAL ATTACHMENT

## Quick-Coupler (TILTROTATOR/ROTATING QUICK COUPLER USE)

Basic of Quick Coupler for excavator.

### Features

- Pro-longed lifetime with superior durability
- Double safety device
- Simple detachment
- Secured space for safety pin



### JK Push Type (5~13 ton)

Model	Carrier (ton)	Weight (kg)	L (mm)	H (mm)	H1 (mm)	W (mm)	B (mm)	Working Pressure (bar)	Required Flow Rate (lpm)
JKQPS 50	5~6	55~70	575~600	286	178.5	259~269	45	40~320	10~20
JKQPS 140	11~13	170~190	815	306	230	408~423	50		

※ Above specification can be changed without prior notice to improve the performance. (warranty period - one year)



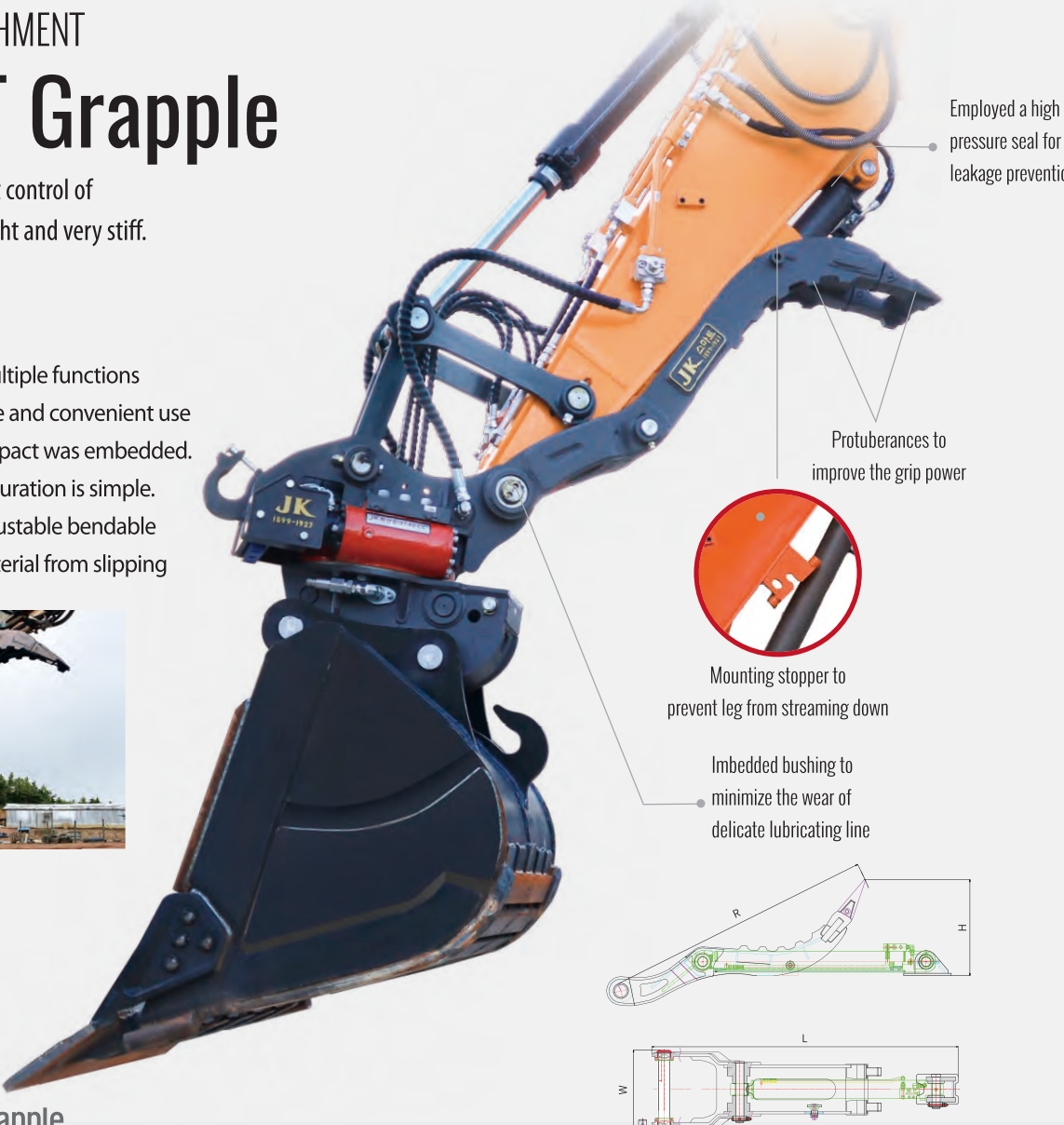
JK TOTAL ATTACHMENT

SMART Grapple

You can feel most smart control of this product which is light and very stiff.

Features

- Possible to use for multiple functions
- Superior performance and convenient use
- Cushion to absorb impact was embedded.
- Procedure of reconfiguration is simple.
- 220 degree angle adjustable bendable
- Prevent handling material from slipping



JK MINI SMART Grapple

Model	Applicable Carrier	Carrier (ton)	Working Pressure (kg/cm <sup>2</sup> )	Weight (kg)	R (mm)	L (mm)	W (mm)	H (mm)
JKSG17	Yanmar17, KOBELCO17	1.7	80~110	30~40	645~940	860~870	240~265	280~350
JKSG20/25	Yanmar20/25	2.0~2.5	90~120	40~45	810~850	860~870	260~270	290~380
JKSG30/35	Kubota30(Old), Yanmar30/35	3.0~3.5	100~130	45~50	810~850	860~870	260~270	290~380

JK SMART Grapple

Model	Carrier (ton)	Working pressure (kg)	Weight (kg)	R (mm)	L (mm)	W (mm)	H (mm)
JKSG50	4~6	110~140	85	1,060	1,394	333	337
JKSG80	7~10	110~140	110	1,265	1,381	350	405
JKSG140	9~13	150~170	200	1,422	1,850	475	508
JKSG200	18~22	170~200	300	1,850	2,200	560	705
JKSG300	28~32	180~220	400	2,200	2,500	620	880

SMART Grapple for Rotating Quick Coupler

Model	Carrier (ton)	Working pressure (kg/cm <sup>2</sup> )	Weight (kg)	R (mm)	L (mm)	W (mm)	H (mm)
JKRSMG50	4~6	110~140	85	1,060	1,394	207~234	337
JKRSMG80	7~10	110~140	130	1,420	1,381	370	464
JKRSMG140	9~13	150~170	220	1,579	1,812	348~380	520

※ Above specification can be changed without prior notice to improve the performance. (warranty period – one year) ※ Applicable carrier : mini ~30 ton

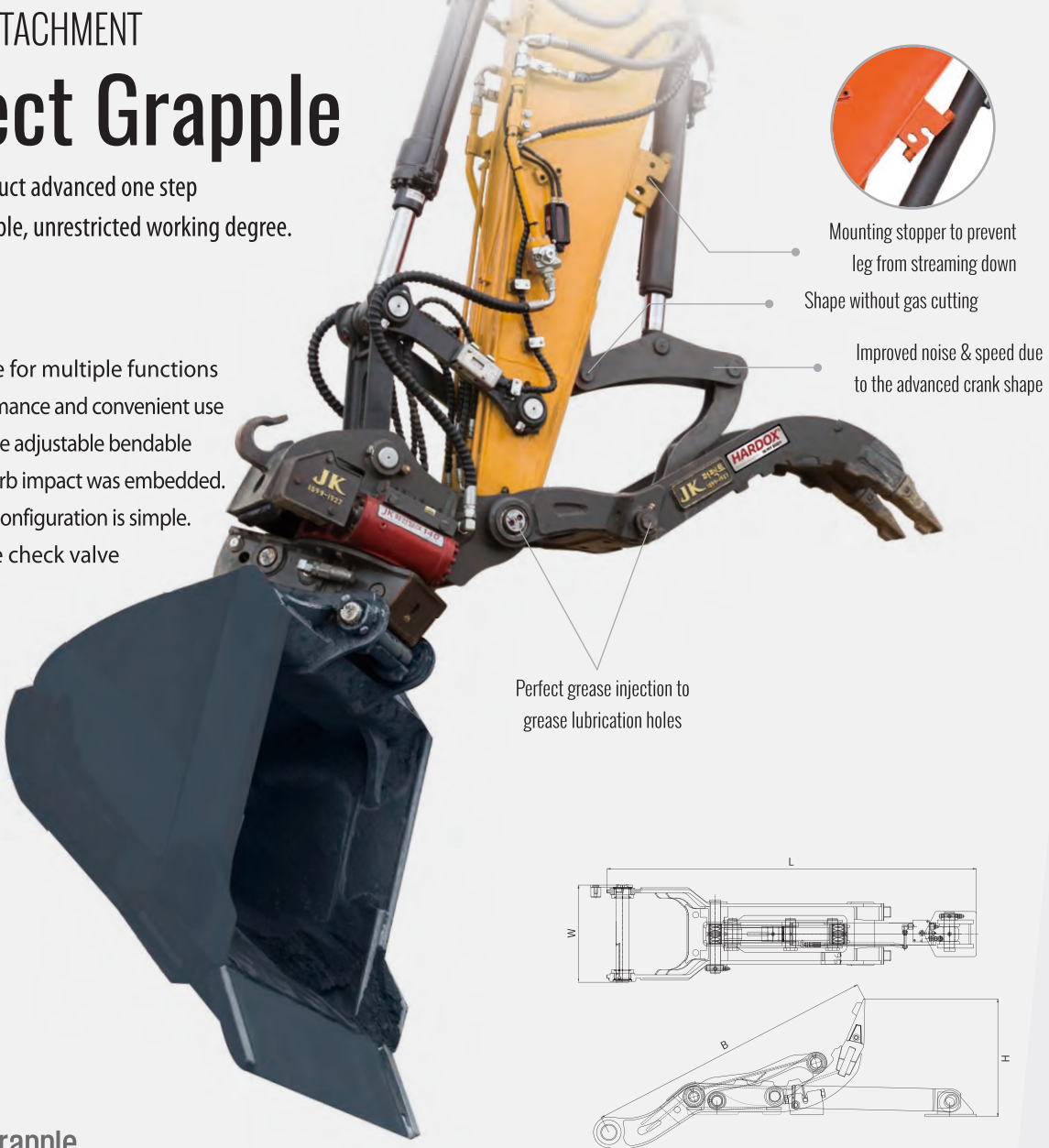
JK TOTAL ATTACHMENT

Perfect Grapple

Popularized product advanced one step from Smart Grapple, unrestricted working degree.

Features

- Possible to use for multiple functions
- Superior performance and convenient use
- 280 degree angle adjustable bendable
- Cushion to absorb impact was embedded.
- Procedure of reconfiguration is simple.
- Employed safe check valve



JK Perfect Grapple

Model	Carrier (ton)	Working Pressure (kg)	Weight (kg)	R (mm)	L (mm)	W (mm)	H (mm)
JKPFG50	5~7	140~180	120	1,060	1,384	333	337
JKPFG140	9~13	150~170	200	1,422	1,850	475	508

Perfect Grapple for Rotating Quick Coupler

Model	Carrier (ton)	Working Pressure (kg)	W (mm)	L (mm)	R (mm)	H (mm)	Weight (kg)
JKRPFG50	4~6	140~160	140~160	1,386	1,060	404	120
JKRPFG140	9~13	150~170	150~170	1,905	1,584	520	250

※ Above specification can be changed without prior notice to improve the performance. (warranty period – one year) ※ Applicable carrier 03~06ton





JK TOTAL ATTACHMENT

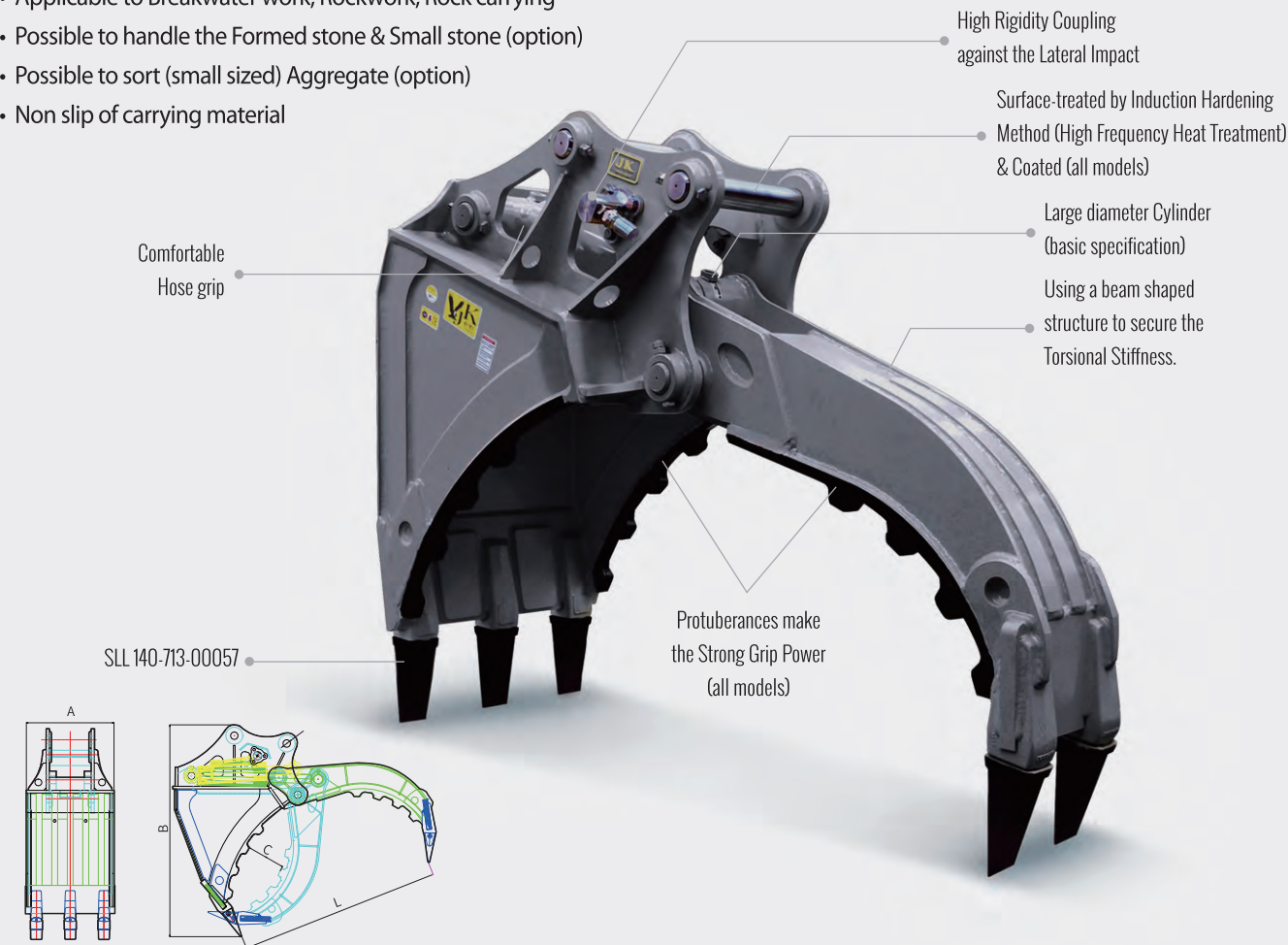
Bucket

STONE Grab (Fixed Type)

Optimized product for large stone / rock and also price is economical

Features

- Applicable to Breakwater work, Rockwork, Rock carrying
- Possible to handle the Formed stone & Small stone (option)
- Possible to sort (small sized) Aggregate (option)
- Non slip of carrying material



※ Hyd. Hose for Fixed Bucket Stone Grab is included in the scope of supply, but One-Touch Coupler is option.

Model	Carrier ton	A mm	B mm	C mm	L (in open) mm	Weight kg	Working Pressure kg/cm <sup>2</sup>	Max. Pressure kg/cm <sup>2</sup>	Flow Rate Lpm(L/min)	Bucket Volume m <sup>3</sup>	Tooth Number
JKFG I 50	4~6	430	1,153	164	1,183	305	110~150	180	30~60	0.09	MX40-1070-05031
JKFG I 140	8~13	636	1,545	220	1,550	730	150~170	190	90~120	0.33	SL140-713-00057
JKFG I 200	18~22	802	1,938	309	2,220	1,430	160~200	210	100~150	0.65	DX300-713-00054A
JKFG I 300	28~32	833	2,060	320	2,235	1,860	160~210	220	130~200	0.7	DX300-713-00054A
JKFG I 400	33~39	944	2,270	422	2,520	2,500	180~210	230	170~250	0.89	RX370-61NA-31310

※ Above specification can be changed without prior notice to improve the performance. (warranty period – one year)



JK TOTAL ATTACHMENT

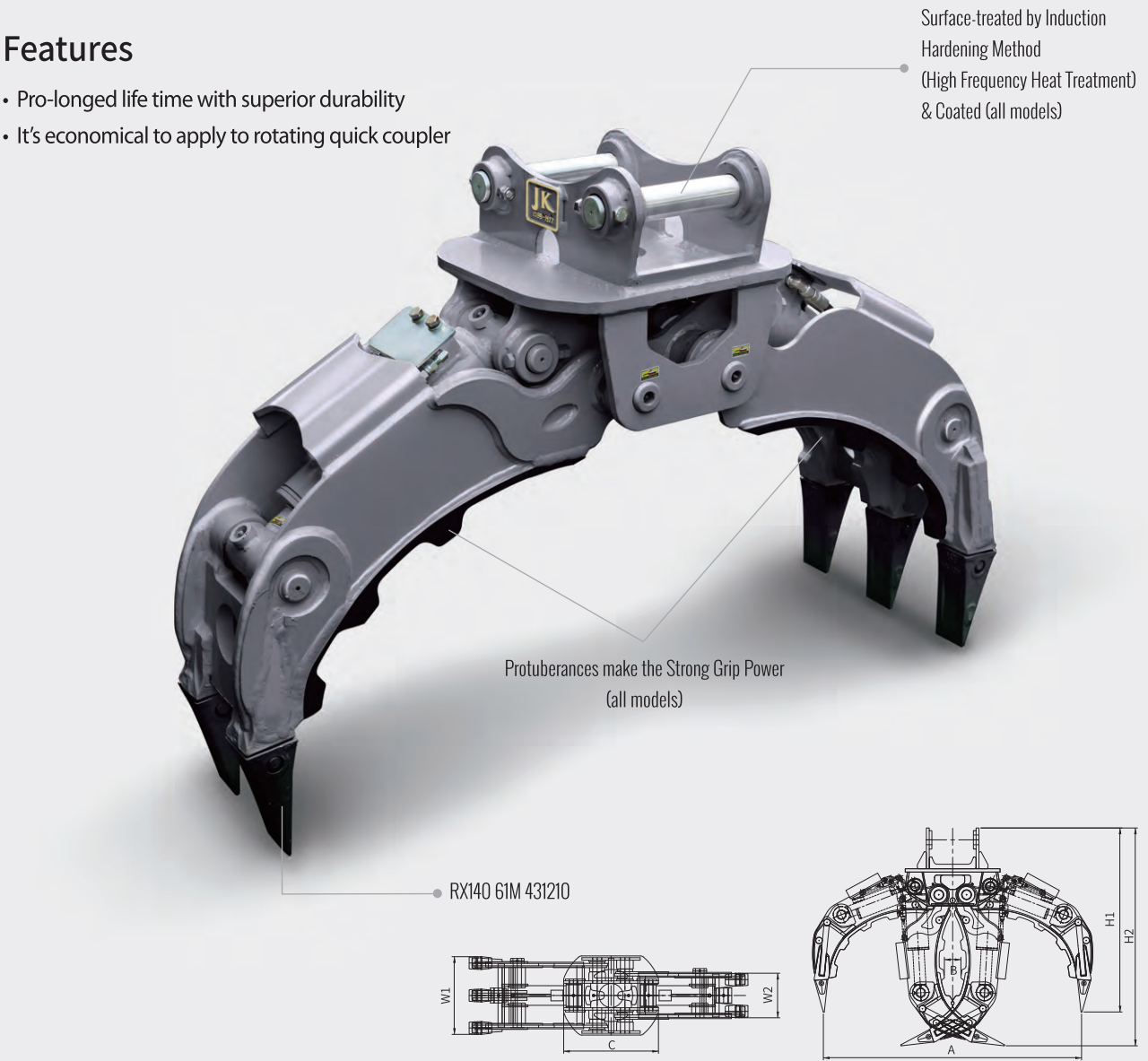
STONE Grab II

(Fixed Type)

Most idealistic model and exclusively combined with Rotating Quick Coupler.

Features

- Pro-longed life time with superior durability
- It's economical to apply to rotating quick coupler



Model	Carrier (ton)	Working Pressure (kg/cm <sup>2</sup> )	A (mm)	B (mm)	C (mm)	W1 (mm)	W2 (mm)	H1 (mm)	H2 (mm)	Weight (kg)
JKFG II 50	4~6	110~200	1,280	100	450	430	245	940	1,132	350
JKFG II 140	9~13	150~170	1,700	120	628	507	326	1,440	1,216	800

※ Above specification can be changed without prior notice to improve the performance. (warranty period – one year)





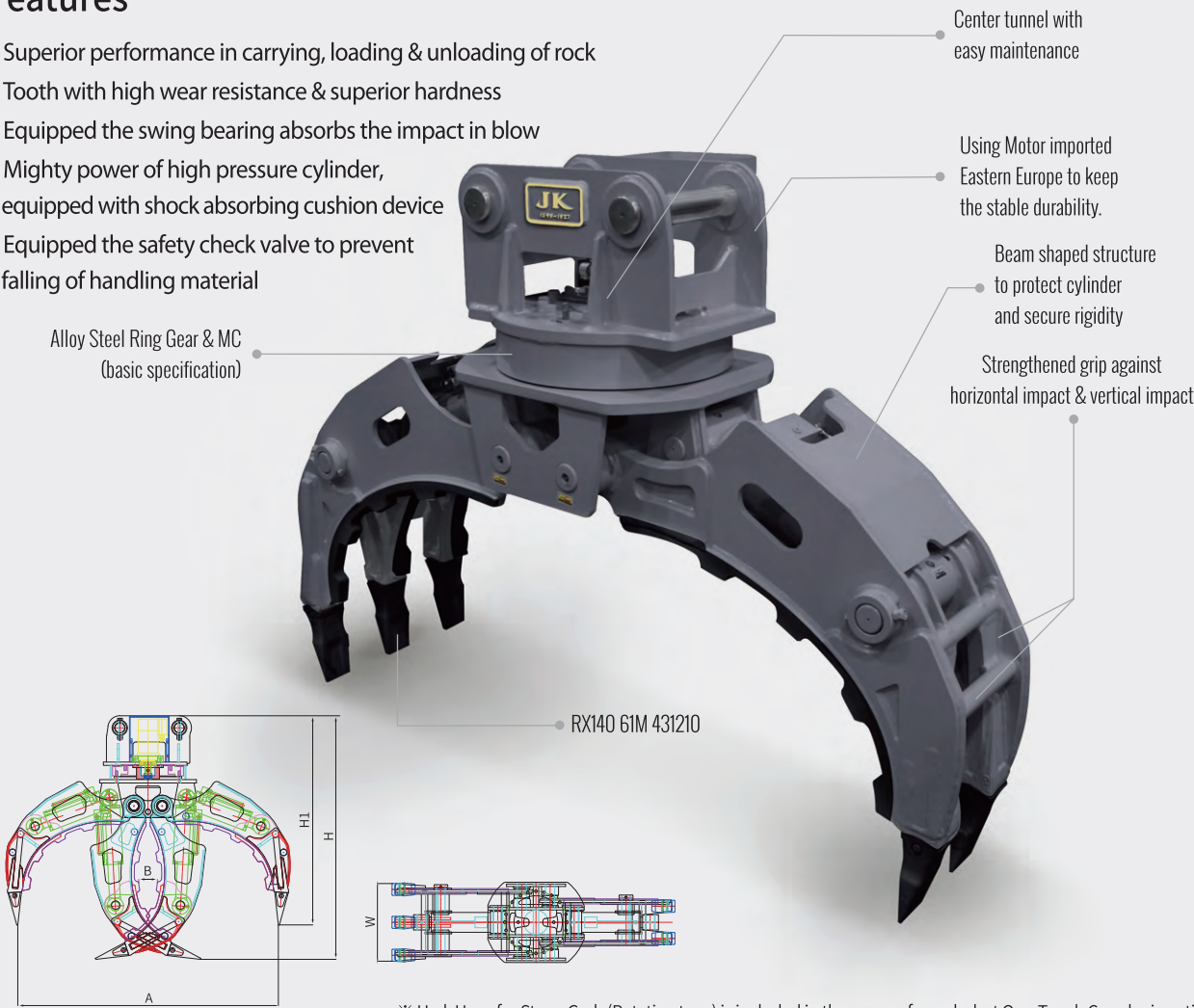
# JK TOTAL ATTACHMENT

## Stone Grab (Rotating Type)

Two Cylinders were used for the delicate operation, and the product optimized to Architecture, Landscape, Stream Repair work.

### Features

- Superior performance in carrying, loading & unloading of rock
- Tooth with high wear resistance & superior hardness
- Equipped the swing bearing absorbs the impact in blow
- Mighty power of high pressure cylinder, equipped with shock absorbing cushion device
- Equipped the safety check valve to prevent falling of handling material



※ Hyd. Hose for Stone Grab (Rotating type) is included in the scope of supply, but One-Touch Coupler is option.

Model	Carrier	A	B	W	H	H1	Weight	Working Pressure (Cylinder)	Cylinder (Setting Pressure)	Flow Rate	Hyd. Motor	Max. Torque	Max. Inlet Pressure	Max. Speed	Max. Flow Rate	Tooth
Unit	ton	mm	mm	mm	mm	mm	kg	kg/cm <sup>2</sup>	kg/cm <sup>2</sup>	l/min		daNm	bar	rpm	l/min	Number
JKRSG50	4~6	1,280	100	430	1,360	1,190	365	110~200	250	30~50	MR315CU	61	225	240	75	MX40-1070-05031
JKRSG140	9~13	1,700	120	507	1,625	1,400	850	150~220	250	90~120	MT500	160	300	285	150	RX140-61M4-31210
JKRSG200	18~22	2,100	250	620	2,045	1,740	1,960	160~240	260	100~150	MT500	160	300	285	150	DX220-K1000344A
JKRSG300	28~32	2,345	268	665	2,210	1,870	2,100	160~240	260	130~200	MT500	160	300	285	150	DX300-713-00054A

※ Above specification can be changed without prior notice to improve the performance. (warranty period – one year)



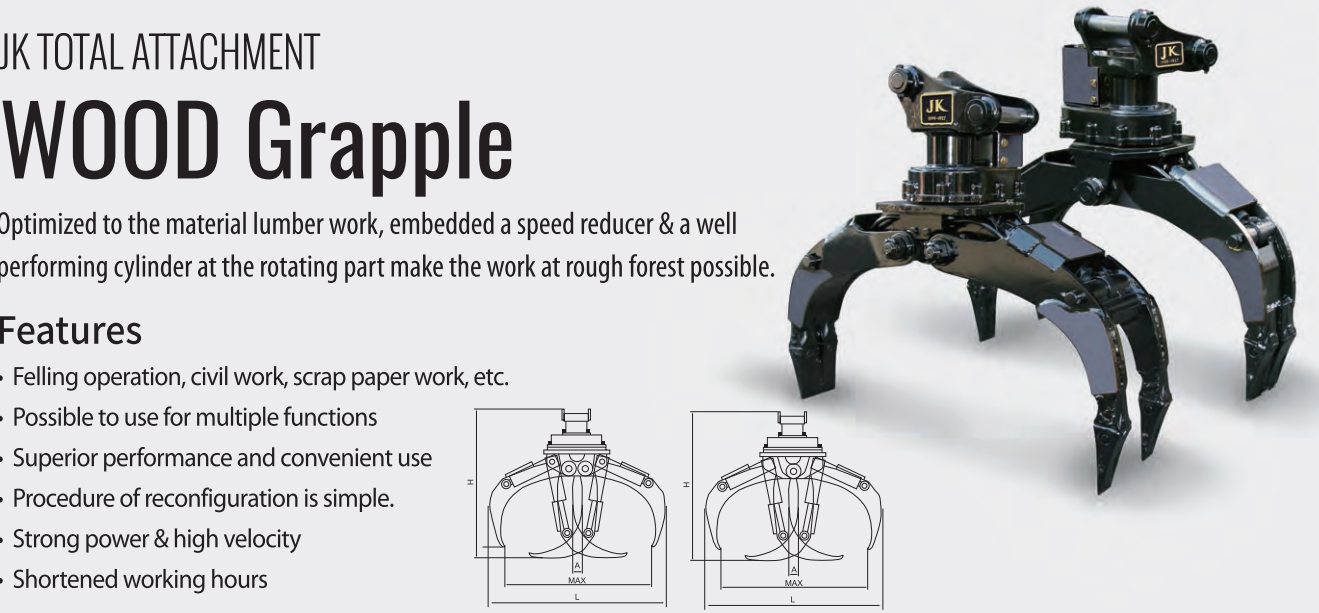
# JK TOTAL ATTACHMENT

## WOOD Grapple

Optimized to the material lumber work, embedded a speed reducer & a well performing cylinder at the rotating part make the work at rough forest possible.

### Features

- Felling operation, civil work, scrap paper work, etc.
- Possible to use for multiple functions
- Superior performance and convenient use
- Procedure of reconfiguration is simple.
- Strong power & high velocity
- Shortened working hours



Model	Weight	Volume	Grasping Power	Jaw-open Width (MAX)	Jaw-closed Width (A)	Overall Height (H)	Overall Width (L)	Flow Rate	Max. working Pressure	Max. flow rate	Max. Rotating Pressure	Carrier
Unit	kg	l	ton	mm	mm	mm	mm	lpm	bar	lpm	bar	ton
JKWG I 05	260	-	1.0	950	60	1,103	1,000	50-60	210	55	100	5-6
JKWG II 05	290	-	1.0	1,150	80	1,103	1,200	50-60	210	55	100	5-6

※ Above specification can be changed without prior notice to improve the performance. (warranty period – one year)

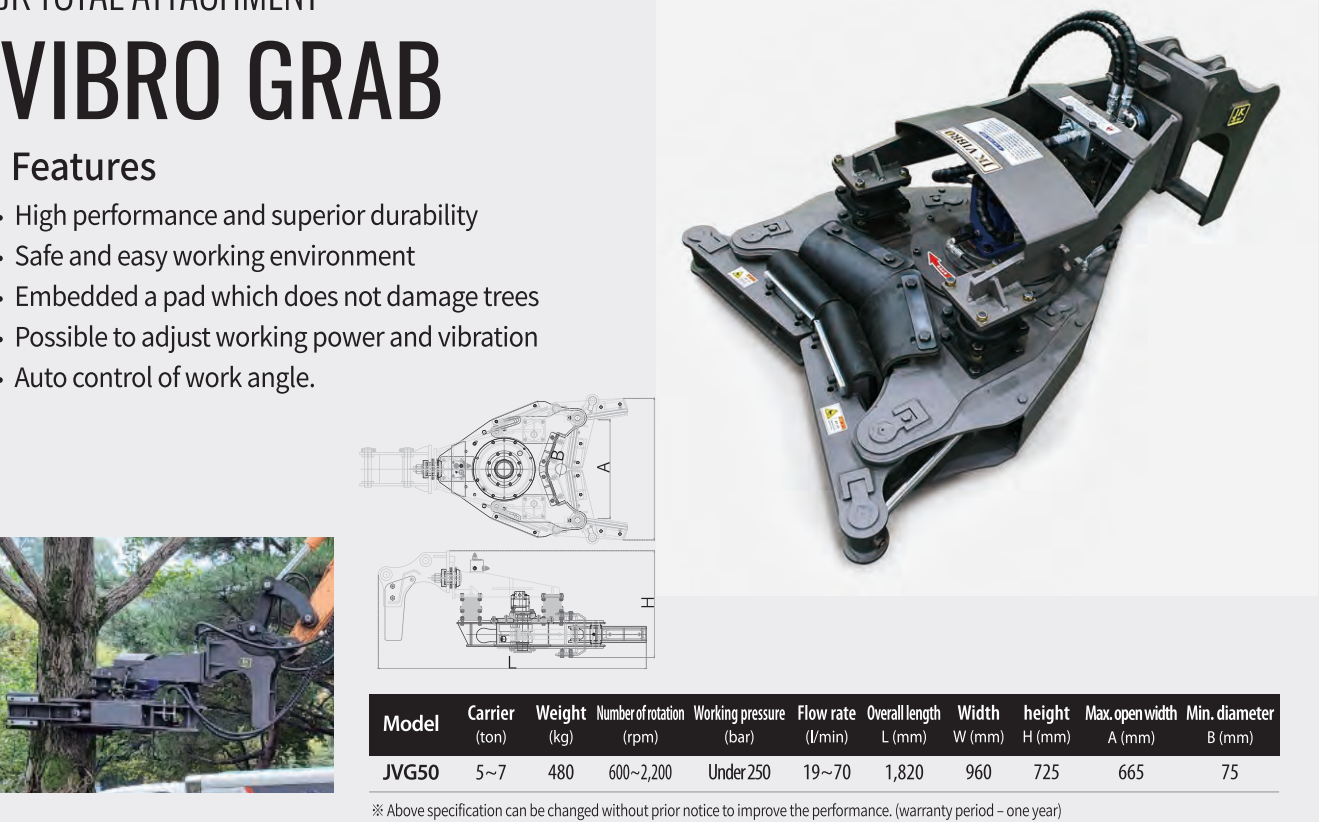


# JK TOTAL ATTACHMENT

## VIBRO GRAB

### Features

- High performance and superior durability
- Safe and easy working environment
- Embedded a pad which does not damage trees
- Possible to adjust working power and vibration
- Auto control of work angle.



Model	Carrier (ton)	Weight (kg)	Number of rotation (rpm)	Working pressure (bar)	Flow rate (l/min)	Overall length L (mm)	Width W (mm)	height H (mm)	Max. open width A (mm)	Min. diameter B (mm)
JVG50	5~7	480	600~2,200	Under 250	19~70	1,820	960	725	665	75

※ Above specification can be changed without prior notice to improve the performance. (warranty period – one year)



# JK TOTAL ATTACHMENT

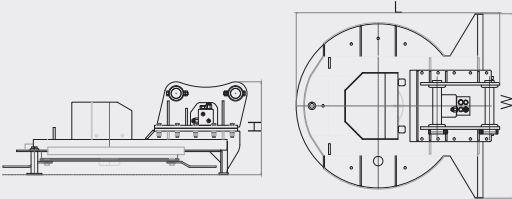
## Circular Mower

### Features

- Cut miscellaneous small tree with strong power besides weeding
- Employed 3-folding cutter possible to dismantle and assembly
- High durability with HARDOX special steel plate
- No need a separate hydraulic oil piping line (co-use hyd. oil piping line of breaker)
- Excellent performance harmonized with a excavator

Specification	Model	JMO 30	JMO 50	JMO 140	JMO 200
Carrier	ton	3~4	5~7	10~14	18~22
Cutting width	mm	815	815	1,400	1,400
Weight	kg	175	180	540	560
Number of rotation	rpm	600~3,000	600~3,000	600~2,200	600~2,200
Working pressure	bar	less than 250	less than 250	less than 250	less than 250
Flow rate	l/min	12~60	12~60	31~116	50~186
Overall length	mm	892	960	1,515	1,515
Width	mm	870	870	1,372	1,372
Height	mm	420	490	610	638
Number of Cutter	개	3	3	3	3

※ Above specification can be changed without prior notice to improve the performance. (warranty period – one year)



# JK TOTAL ATTACHMENT

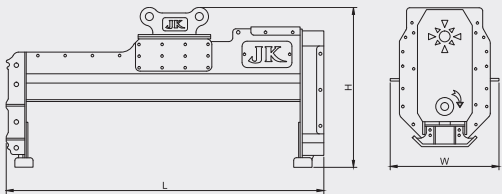
## Square Mower

### Features

- Cut miscellaneous small tree with strong power besides weeding
- No need a separate hydraulic oil piping line (co-use hyd. oil piping line of breaker)
- Excellent performance harmonized with a excavator

Specification	Model	JMW 30/JMC 30	JMW 50/JMC 50	JMW 140/JMC 140
Carrier	ton	3~4	5~7	10~14
Cutting width	mm	1,200	1,200	1,500
Number of rotation	rpm	2,200~2,500	2,200~2,800	2,500~3,000
Working pressure	bar	200~250	200~250	200~250
Hyd. Motor	CC	25	36	47
Overall length	mm	1,750	1,750	1,750
Width	mm	595	595	595
Height	mm	880	880	980
Number of Cutter	개	36	36	36
Weight	kg	320	330~450	420~520

※ Above specification can be changed without prior notice to improve the performance. (warranty period – one year)



# JK TOTAL ATTACHMENT

## ORANGE GRAPPLE

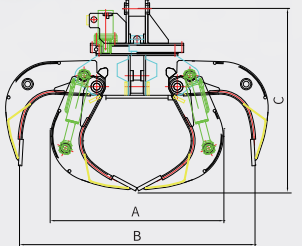
Install to the excavator in various mounting type, also using by many recycling companies.

### Features

- High performance in loading & unloading of large quantity of scrap
- Designed low body for the work convenience
- Cylinder located inside of body to avoid damage due to the external impact
- Employed heavy duty type bearing
- 3 models (4-foot, 5-foot, 6-foot)

Model	A (mm)	B (mm)	C (mm)	Weight (kg)	max. pressure (bar)	max. pressure (in rotation) (bar)	Normal rpm (rpm)	Carrier (ton)
JKROG140	1,050	1,500	1,250	1,150	300	150	15	12~22
JKROG200	1,380	1,800	1,450	1,500	350	150	15	22~30
JKROG300	1,580	2,000	1,548	1,800	350	150	15	22~30

※ Above specification can be changed without prior notice to improve the performance. (warranty period – one year)



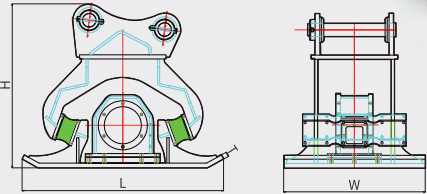
# JK TOTAL ATTACHMENT

## COMPACTOR

High efficiency in medium / large scale road construction

### Features

- High quality hyd. motor by model
- Employed oil flow control valve (single body type)
- Optimal compacting efficiency due to wide compacting plate



Model	Carrier (ton)	Compacting Power (ton)	Number of Rotation (rpm)	Flow rate (cc/rev)	Working Pressure (bar)	Max. Pressure (bar)	L×W×T (mm)	H (mm)	q'ty of vib. pad	Weight (kg)
JKCP50	4~6	4.5	600~3,000	30	100~150	180	915×530×25	745	4	380
JKCP140	9~13	7	600~2,000	63	150~200	250	1,145×700×28	850	4	650
JKCP200	18~22	13	600~2,000	80	150~210	250	1,250×850×30	975	4	950
JKCP300	28~32	15	600~2,000	80/90	150~210	250	1,350×950×32	1,050	6	1,150

※ Above specification can be changed without prior notice to improve the performance. (warranty period – one year)



# JK TOTAL ATTACHMENT BREAKER

## Features

- Mighty power, superior quality
- Manufactured with 100% domestic materials

Specification	Model	JKB40	JKB50
Weight	kg	250	765
Flow rate	l/cm <sup>2</sup>	40~70	80~100
working oil pressure	kgf/cm <sup>2</sup>	110~140	150~170
Number of blow	bpm	500~900	350~700
Overall length × overall width	mm	1,349×270	1,934×408
Dia. of Rod	mm	68	100

※ Above specification can be changed without prior notice to improve the performance. (warranty period – one year)

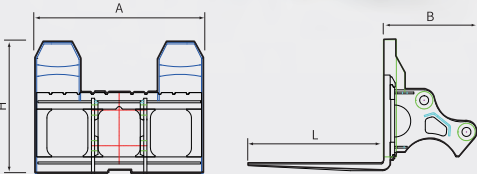


# JK TOTAL ATTACHMENT Lifting Fork

3 ton fork manufactured in special steel, high durability

## Features

- Loading & carrying of building materials, brick, pallet
- Adjustable foot interval



## JKLQ140

- Dual bar system : pallet or cargo can be carried more stably with 55mm double pin type ensures robur durability and long life span.
- Safety first : check v/v and divide v/v provide stable operation
- Auto-quick system : Automatic hyd. hose connection system



Model	Carrier (ton)	A (mm)	B (mm)	H (mm)	L (mm)	Fork (ton)	Weight (kg)
JKLF50	4~6	966	583	810	1,070(1,200)	2.5	214
JKLF140	9~13	978	730	860	1,200	3	346
JKLFQ140	4.25	1,090	800	1,100	1,200	3	425

※ Above specification can be changed without prior notice to improve the performance. (warranty period – one year)

# JK TOTAL ATTACHMENT Ripper

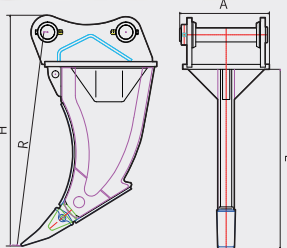
Superior flat board work by large powerful tooth is available.

## Features

- The flat board work is available
- Buildup of durability with large ripper tooth
- Remarkable quality by the upgraded performance

Model	Carrier (ton)	A (mm)	R (mm)	H (mm)	L (mm)	Weight (kg)
JKRP50	5~7	260	700	747	593	90
JKRP140	9~13	383	1,016	1,085	860	270
JKRP200	18~24	488	1,115	1,185	914	430
JKRP300	28~31	588	1,270	1,360	1,060	620
JKRP400	32~40	617	1,530	1,640	1,275	880
JKRP450	41~47	647	1,570	1,700	1,295	950
JKRP500	45~50	682	1,600	1,717	1,300	1,065

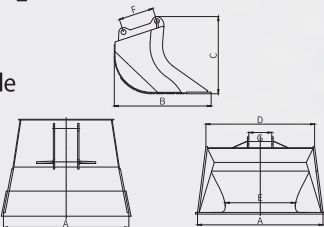
※ Above specification can be changed without prior notice to improve the performance. (warranty period – one year)



# JK TOTAL ATTACHMENT II pin bucket · III pin bucket

## Features

- Made of HARDOX steel material, it is light and durable
- Made of three pins, it is easy to upload to the truck and do flat work



## JK Tilt Rotator only 2-pin bucket

Model	A (mm)	B (mm)	C (mm)	D (mm)	E (mm)	F (mm)	G (mm)	H (mm)	Weight (kg)	Volume (m <sup>3</sup> )
03 class	650	1,080	690	650	-	285	175	45	-	0.18
06 class	1,500	1,170	930	1,300	850	400	277	65	-	0.60



JK Rotating quick coupler only 3-pin bucket

## JK Rotating quick coupler only 3-pin bucket

Model	A (mm)	B (mm)	C (mm)	D (mm)	E (mm)	F (mm)	G (mm)	H (mm)	Weight (kg)	Volume (m <sup>3</sup> )
03 class	1,100	1,250	710	1060	800	285	177	45	-	0.30
06 class	1,200	1,550	870	1150	850	390	277	65	-	0.70

※ Above specification can be changed without prior notice to improve the performance. (warranty period – one year)