



# COMPANY INTRODUCTION



YUCHANG CMI CO.,LTD



The background of the slide features a close-up of architectural blueprints. A black ruler is placed horizontally across the middle of the image. Below the ruler, a green circular object, possibly a protractor or a piece of paper with circular patterns, is visible. The blueprints show various room layouts and dimensions, including labels like 'COVERED PATIO', 'MASTER BEDROOM', 'FAMILY ROOM', 'FOYER', and 'BEDROOM'. Dimensions such as '10'-6" x 12'-4"', '18'-6" x 6'-8"', and '10'-0"' are visible. The word 'CONTENTS' is written in large, white, bold, sans-serif capital letters on a dark blue rectangular background that spans the width of the slide.

# CONTENTS

**1.HISTORY**

**2.GENERAL INFORMATION**

**3.ORGANIZATION**

**4.PRODUCTS**

**5.MARKET**



# HISTORY

**1988**

- Established YUCHANG tractor in Seoul

**2003**

- Started to use GETT as private brand of YUCHANG

**2010**

- Registered GETT brand in RUSSIA.

**2017**

- Launched Crushing Plant Business



**2002**

- Organized overseas business in HQ

**2005**

- Changed incorporation's name into YUCHANG CMI

**2016**

- Launched Hydraulic Breaker business.
- Presented BAUMA CHINA 2016

**2018 ~ 2019**

- Presented Mining Vietnam 2018
- Presented CTT2018
- Presented BAUMA CHINA 2018
- Presented AIMEX 2019
- Presented ETHIO CON 2019

# GENERAL INFORMATION

**Foundation** March 30<sup>th</sup>, 2006

**Business**

- Spare parts for Heavy machineries
- Crusher
- Crusher Plant

**Employee** 10

**Turnover** \$ 4,923,076.00 (2022 year)

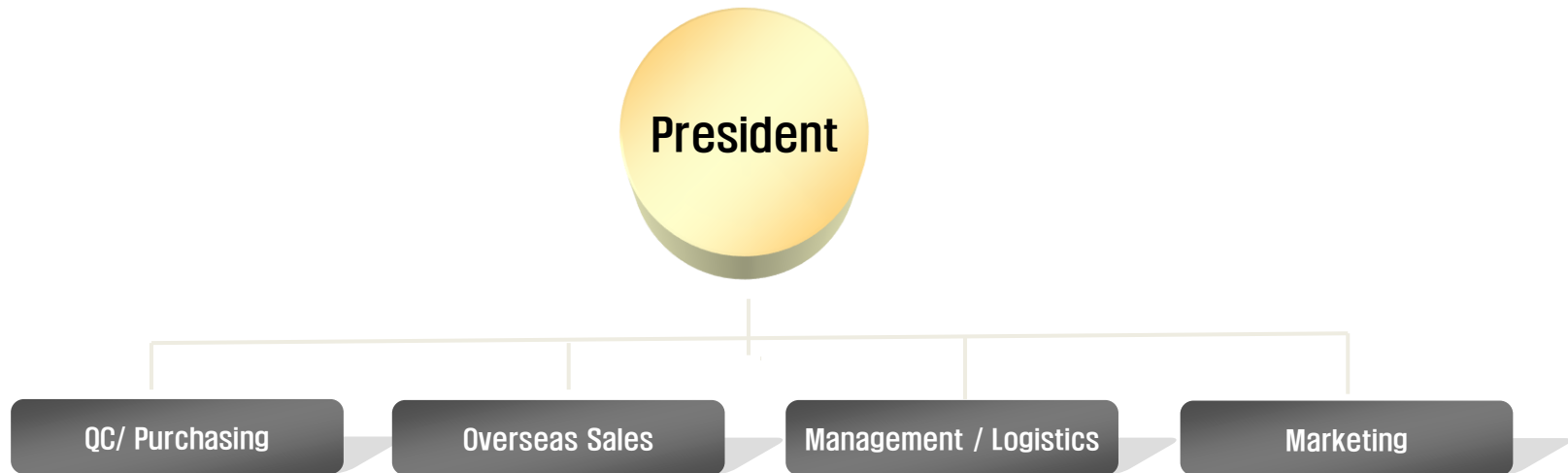
**Website** [www.gett.co.kr](http://www.gett.co.kr)

**Location**

- 55Gil 3, Gukhoe Daero, Yeongdeungpo-Gu, Seoul, Korea
- 51 37Beon Gil, Gajeong-ro, Seo-Gu, Incheon City, Korea



# ORGANIZATION



- New product development
- Managing production quality
- Production order and delivery management

- Discovery of overseas buyers
- Participation in exhibitions
- Order management

- Import and export management
- Receiving and Forwarding management
- Quality inspection
- Work Safety management

- SNS marketing
- Product promotion
- Website management
- Potential customer list management

# PRODUCTS

## G.E.T.(Ground Engaing Tools)

- Tooth, Adapter, Side cutter
- Bucket
- Blade, Cutting edge

## Undercarriages

- Track link, Track chain
- Roller(Upper, Lower)
- Sprocket(Segment)
- Idler

## Spare Parts

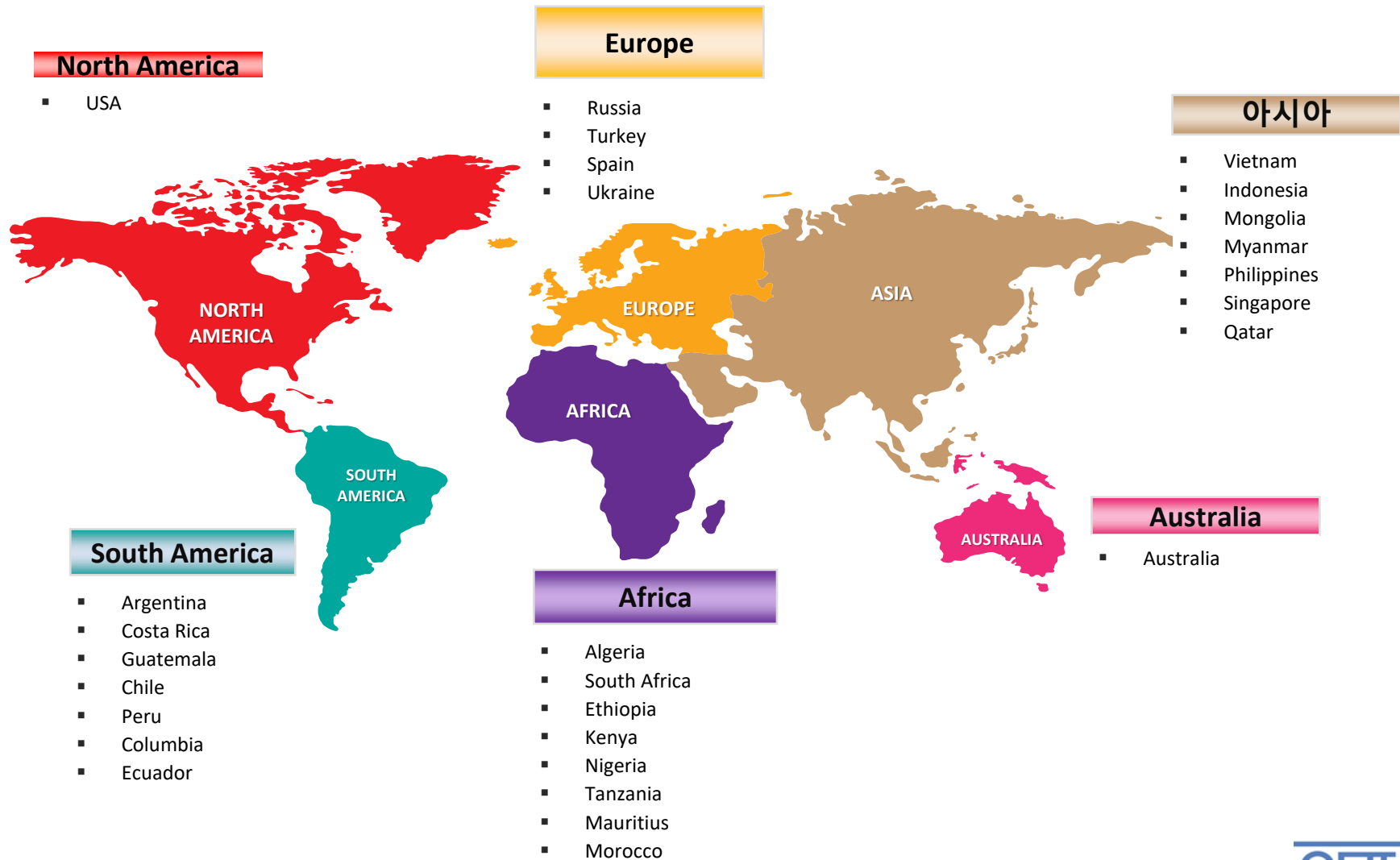
- All kinds of spare parts
- Hydraulics – Pump, Motor
- Lubricants

## Crusher

- Crusher
- Crusher plant
- Screen. Feeder



# MARKET



# THANK YOU



82-2-2632-3945



55GIL 3, Gukhoe-Daero, Yeongdeung po-Gu, Seoul,Korea



Website : <http://www.get.co.kr>

Blog : <https://blog.naver.com/gettsns>

Youtube : [https://www.youtube.com/channel/UCAPhnQKmlQKZ5U\\_KF9SWsIA](https://www.youtube.com/channel/UCAPhnQKmlQKZ5U_KF9SWsIA)

