

BEST COMPANY SAMYOUNG PLANT



SAMYOUNG PLANT



1. Outline



| | |
|---------|--|
| Address | 158 Simisil-Gil, Daedeok-Myeon, Anseong, Gyeonggi, Korea |
|---------|--|

| | |
|------|-----------------------|
| Land | 31,600 m ² |
|------|-----------------------|

| | |
|---------|---|
| Factory | 3,915 m ² [90m(L) x 45m(W) x 16.3m(H)] |
|---------|---|

| | |
|--------|--------------------|
| Office | 972 m ² |
|--------|--------------------|

2. History



Foundation 1994

M&A 2006

History

Samyoung Plant acquired the entire crusher manufacturing and production sector from Hyundai Steel, the company which acquired Korea's first crusher manufacturer, Kangwon Industries.

Since the establishment of our company in 1994, we became the best leading crusher manufacturer in Korea

3. Reference

2022~2023 Record (overseas)

| Country | Description | Remar |
|-----------------|-------------------------------------|-----------------|
| Russia(Eastern) | 300T/HR Crushing plant | 3 Sets |
| Russia(Western) | 200T/HR Crushing plant | 2 Sets |
| Mexico | 250T/HR Crushing plant | |
| Philippines | 150T/HR Crushing plant | On going |
| Mongolia | 150T/HR Crushing & Washing plant | On going |
| India | 200T/HR Crushing plant | On going |
| Ethiopia | 150T/HR Crushing plant | 4Sets, On going |



SAMYOUNG PLANT

3. Strength of Technology

FSK TYPE JAW CRUSHER



1. Improved Production

- 1) Increased production by about 20% compared to the old equivalent jaw crusher
- 2) Increase the size of input opening: 5%
- 3) Increased the number of revolutions: 10%
- 4) Increased motor power : 20%

2. Improved Convenience and Durability

- 1) Hydraulic automatic setting device
- 2) Improved mainframe structure and strength

3. Strength of Technology

HS TYPE CONE CRUSHER



1. Optimize crushed sand production
 - 1) Minimize SETTING to increase crushed sand production
 - 2) Maximize SET UNDER rate to minimize RETURN amount
2. First-class aggregate production
 - 1) High speed rotation : 1050RPM
 - 2) Feldspar rate of 10% level
3. Automatic debris removal and automatic setting
 - 1) Automatic discharge of foreign matter by installing a RELEASE cylinder
 - 2) Reduced setting time by using hydraulic motor and fine setting possible
 - 3) Reduced liner replacement time

3. Strength of Technology

MC TYPE CONE CRUSHER



1. Improved Production

- 1) Approx. 20% improvement compared to old equivalent CONE CRUSHER (CC, CSH)
- 2) Increased inlet size : 20%
- 3) Increase the number of revolutions : 10%
- 4) Increased motor power : 15%

2. Improved Convenience

- 1) Hydraulic automatic setting device
- 2) Foreign material discharge through release cylinder
- 3) Lock post cylinder: Top-shelf fixation



SAMYOUNG PLANT

3. Strength of Technology

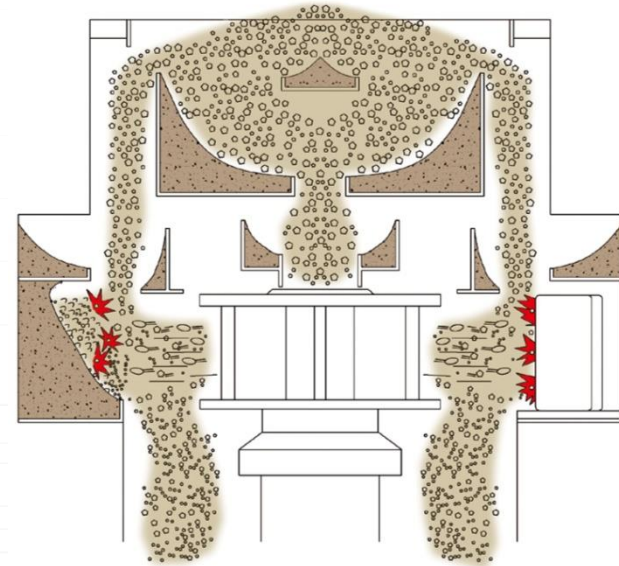
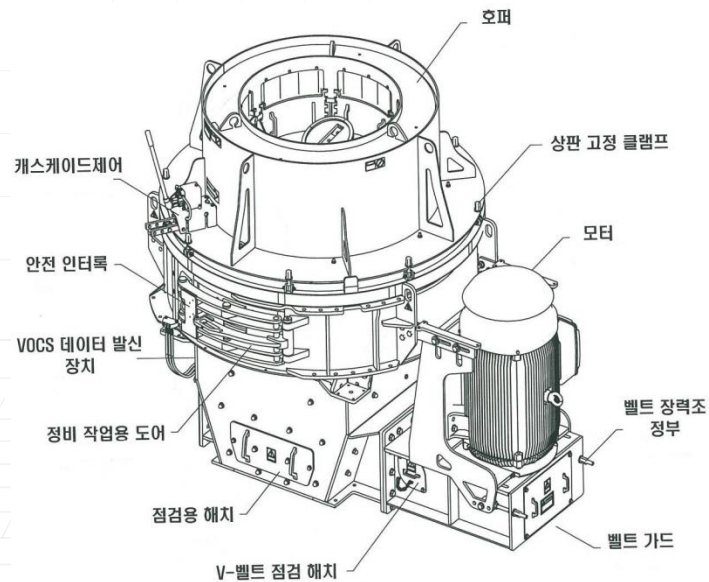
IMPACT CRUSHER



1. Strong crushing strength
2. Solid structure, low noise, low vibration
3. Minimize consumables with ROCK & ROCK TYPE
 - No Anvil
4. Maintain optimal crushing conditions with CASE CADE & OVER FLOW TYPE
 - Prevent overload and increase crushing efficiency

3. Strength of Technology

IMPACT CRUSHER



입형개선폰용(SHAPING)

파쇄용(CRUSHING)



삼영플랜트(주)

3. Strength of Technology

Sand Unit



1. Superior Classification Efficiency
 - Maximize fine sand recovery
 - Improve sand assembly rates
 - Increase sand production
2. Dewatering Screen
 - SIZE : 2.4M(W) x 6.0M(L) : The largest size in Korea
 - Powerful force : Increase dehydration effect
3. CYCLONE
 - SIZE : $\Phi 1,100\text{mm}$
 - Abrasion-resistant rubber (imported) COATING
4. PUMP & MOTOR
 - PUMP : 10" x 8"
 - MOTOR : 90Kw x 8P



SAMYOUNG PLANT

3. Strength of Technology

Water treatment system

1. Complete Automatic system
 - Maximize production efficiency with a complete automatic system between thickener, sludge silo and filter press
2. Filter press(SYFP-24100)
 - Capacity: 33M³/BATCH
 - Filter plate : 2.4M x 2.2M x 100판
3. Thickener(Φ13.5M x H4.5M)
 - Large capacity Thickener : 600M³
 - Automatic transfer of sludge based on sludge concentration (→ sludge silo)
 - Automatic SCRAPPER raising and lowering based on sludge concentration (self-protection)
4. Flocculant mixing and feeding equipment
 - Improved flocculation ability with polymer flocculant stirring tank, divided into chemical preparation tank and chemical injection tank
 - Automatic chemical concentration control function

3. Strength of Technology

Water treatment system



3. Strength of Technology

Research staff

1. Research staff : 15 people
2. Researchers for over 30 years : 5 people
3. Technology transfer and succession development of Gangwon industry
 - 1) Inheritance of Kangwon Industry researchers
 - 2) Acquisition of patents and drawings of Kangwon Industry
 - 3) Acquisition of all facilities including processing and measuring facilities of Kangwon Industry

3. Strength of Technology

Perfect Quality

1. Skilled production staff : 30 people
2. All products made in-house
3. Pre-commissioned and shipped
4. Thorough Incoming inspection of outsourced parts
5. Use the highest quality parts
 - 1) BEARING : SKF or FAG
 - 2) STEEL PLATE : POSCO, HYUNDAI

3. Strength of Technology

Rapid Delivery

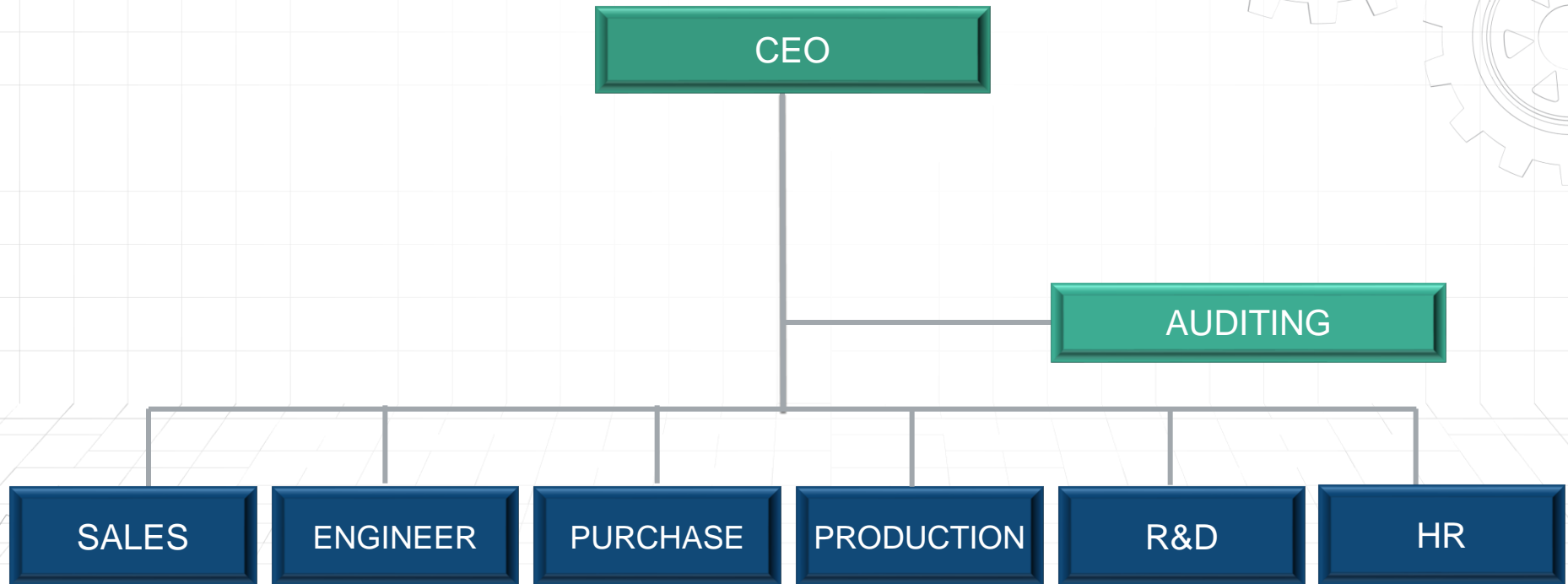
1. Keep enough crusher in stock, including Jaw and Cone crusher
 - Minimize production duration
2. Minimize design time with experienced Engineer
 - Minimize design duration
3. Professional installation staff
 - Minimize installation duration

3. Strength of Technology

Complete and Fast After-Sales Service

1. Have enough parts
2. Dedicated, Skilled support staff
 - 3team (12people)
3. Quick A/S response
 - Dedicated support team

4. Organizational chart



5. MACHINES



JAW CRUSHER



HS TYPE CONE CRUSHER



MC TYPE CONE CRUSHER



5. MACHINES

+ VERTICAL SHAFT IMPACT CRUSHER



+ HORIZONTAL IMPACT CRUSHER



+ BALL MILL



+ VIBRATING SCREEN



+ VIBRATING FEEDER



+ SCALPING SCREEN



6. FACTORY

MACHINING AND ASSEMBLY



FABRICATION AND COMMISSIONING





THANK YOU

SAMYOUNG PLANT CO., LTD.