



SOOSAN

Hydraulic Rock Drill



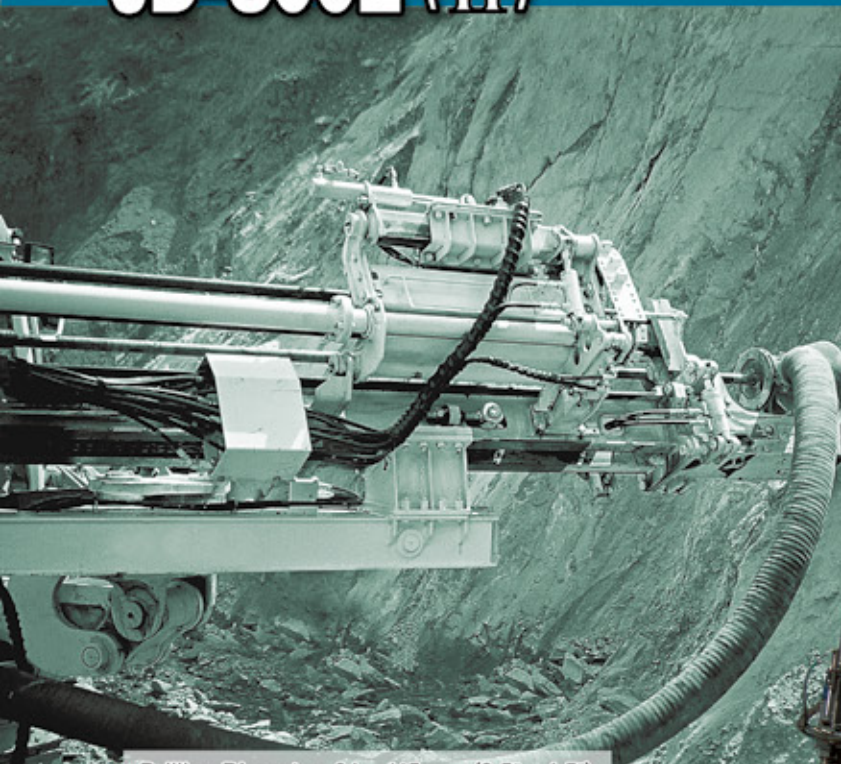
SOOSAN CSM



Drilling Diameter 65 ~ 102 mm (2.5" ~ 4")
Drifter 22hp / 17kw
Air Flushing 5.5 m³ / min, 6.6m³ / min
Drill Steel T38, T45



JD-800 / JD-800ENC / JD-800E (II)



Drilling Diameter 64 ~ 115 mm (2.5" ~ 4.5")
Drifter 27hp / 20kw
Air Flushing 8 m³ / min
Drill Steel T38, T45, T51

JD-1300E





Drilling Diameter 102 ~ 127 mm (4" ~ 5")
 Drifter 30hp / 23kw
 Air Flushing 11.3 m³ / min, 13.9 m³ / min
 Drill Steel T45, T51

JD-1400E (II)



Drilling Diameter 102 ~ 127 mm (4" ~ 5")
 Drifter 33hp / 25kw
 Air Flushing 14 m³ / min
 Drill Steel T51

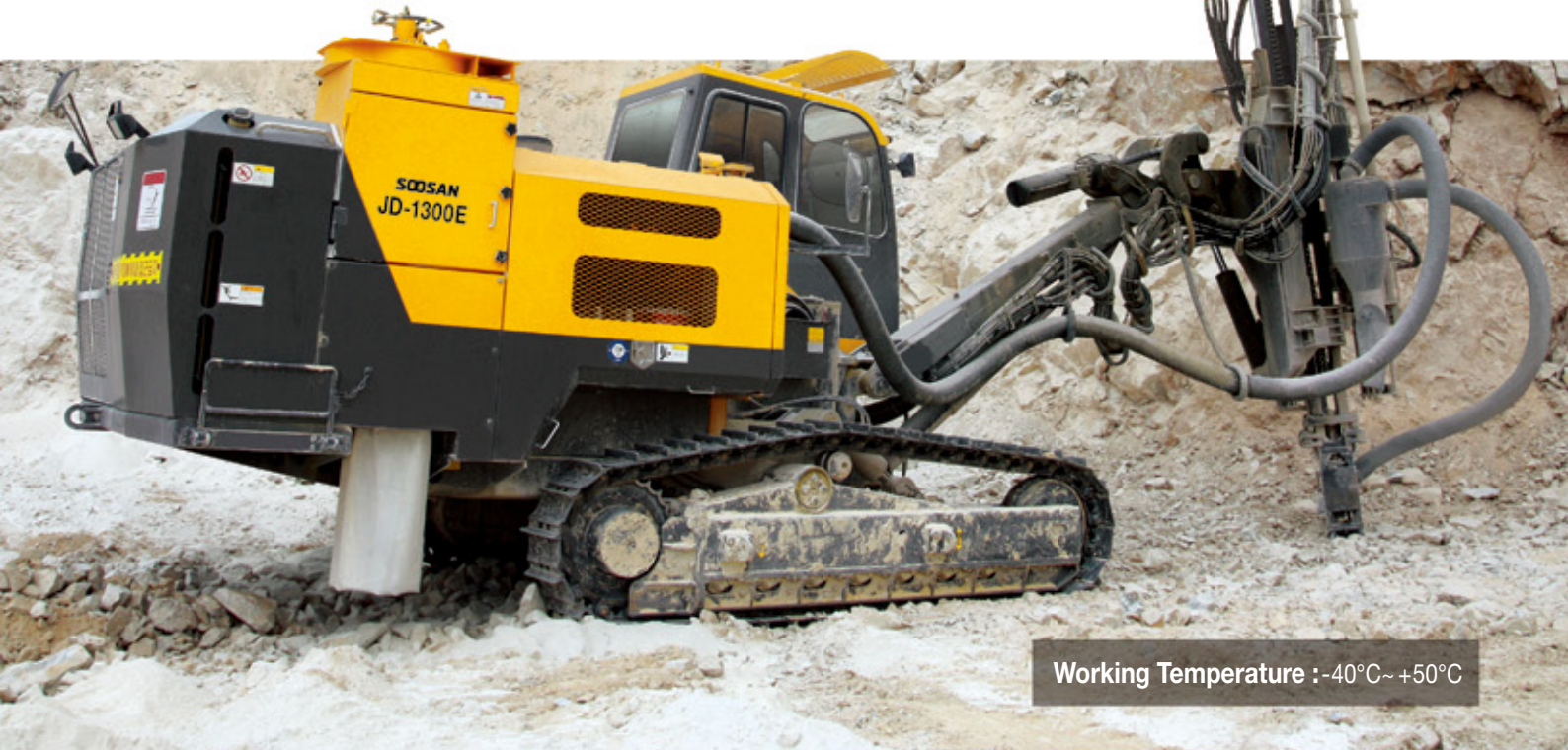
JD-1500E / 1500L

Reliable performance & economic production rate with longer life time
SOOSANCSM will be always there for you.



Operation Panel

Drilling operation features a pilot hydraulic control system. This simple and efficient system eliminates any potential electrical problems in the drilling circuit.



Working Temperature :-40°C~+50°C



Spacious Engine Room

Provides easy access and maintenance.



Safe Cabin

R.O.P.S/F.O.P.S-certificated cabin provides a safe working environment to operator.



Wide visibility

Multiple glass windows provide excellent visibility for drilling and operation.



Movable Dust Hood

Movable Dust Hood allows the operator to see the rod while allowing superb dust control.

Outstanding Gradeability

The optimal combination of a variable piston pump & traveling motor assures excellent mobility in all terrains.



Rod Changer

- Roller Type
- Carousel Type



Cyclone

Improves the life of the dust filters and increases the efficiency of the dust-control system by separating the larger pieces of aggregate at the front of the drill.



Powerful Dust Collector

High efficiency system, features powerful suction and multiple filters to improve drilling performance and allow the operator to easily view the drilling operation.



Centralized Electric Control Panel

Large Electrical Cabinet allows easy access to the electrical components when maintenance or troubleshooting is required.



Oscillation

Independent track oscillation provides safe, smooth and efficient mobility in rough terrain.

Powerful drifter provides outstanding penetration, Straight drilling hole for advanced productivity.

JET Drifter (New)

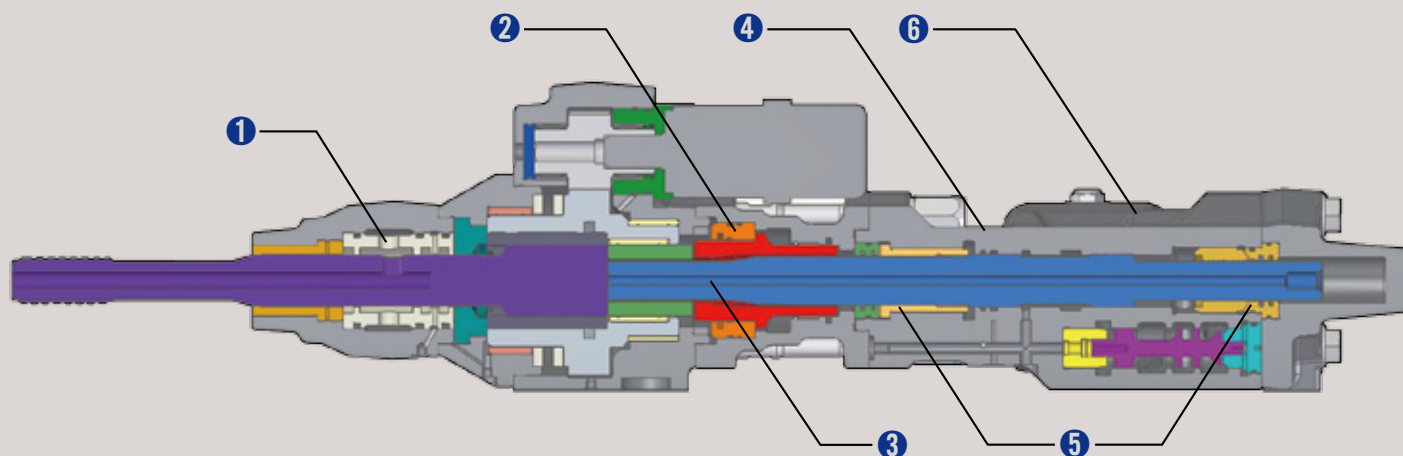
Double (dual) damping system provides high penetration rates of energy in conjunction with maximum drilling economy.



DRIFTER					
Model	-	JET-8 II	JET-9 II	JET-11	JET-15
Impact power	hp (kw)	22(17)	27(20)	28(21)	33(25)
Rotation	rpm	max. 180	max. 190	max. 190	max. 190~125
Rod Thread	mm	T38 / T45	T45 / T51	T45 / T51	T51
Number of Blows	bpm	2,700~3,300	2,200~3,300	2,500~3,000	2,100~3,000
Reverse percussion	-		Option		

Model	JD-800	JD-800E	JD-1300E	JD-1400E	JD-1500E
JET-8 II	Application Model	•	•		
	Hole Range	Ø65mm : Ø102mm			
JET-9 II	Application Model			•	
	Hole Range	Ø64mm : Ø115mm			
JET-11	Application Model			•	
	Hole Range	Ø102mm : Ø127mm			
JET-15	Application Model				•
	Hole Range	Ø102mm : Ø127mm			

• The Structure of JET-8 II



1. Air / Water Combined Flushing Head

Dual seal system in flushing head enables optional water flushing under 14 bar.

2. Hydraulic Damper

It protects the drifter, guide shell and boom absorbing return impact of percussion.

3. Specially Engineered Linear Piston

Piston design allows the maximum transfer of percussion energy into the rock

4. Percussion Adjuster

It balances drifter BPM according to rock hardness.

5. Front/ Rear Bushings and Seal Retainer

The front and rear bushings are designed to minimize the wear of the piston. This innovative design significantly reduces the maintenance expense when rebuilding the hammer.

6. Large Capacity Accumulator

Accumulators optimizes the flow of oil with maximum capacity. This generates a smooth percussion and extends hammer's life.

YAMAMOTO Drifter

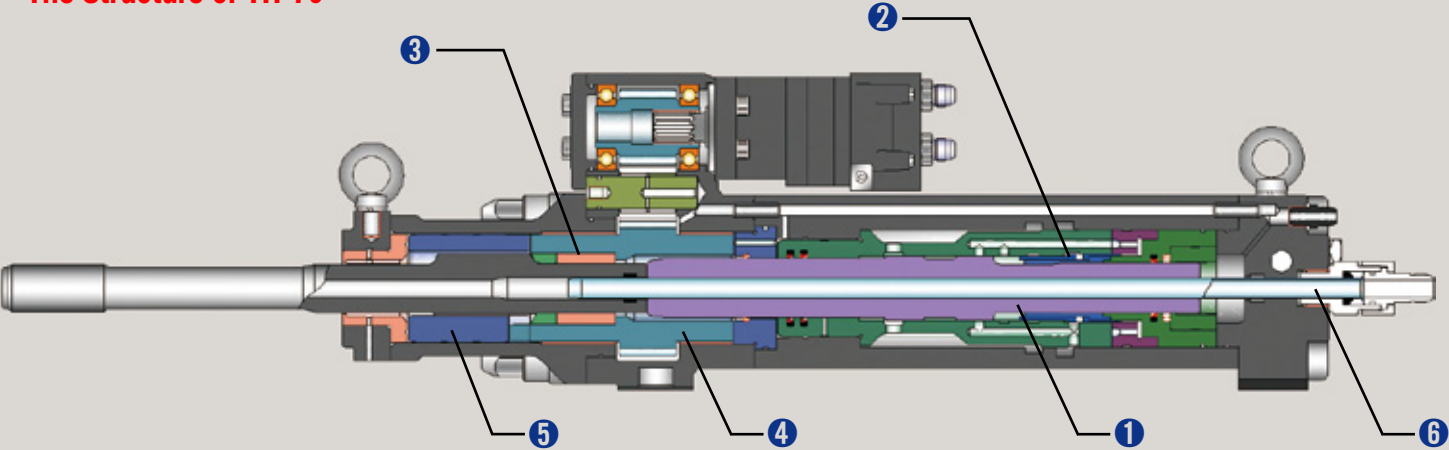
Optional Reverse Percussion feature allows for the simple and efficient removal of a stuck or hung drill string



DRIFTER					
Model	-	YH-70	YH-80	YH-135	YH-225
Impact power	hp (kw)	20 (15)	22 (17)	28 (21)	33 (25)
Rotation	rpm	max. 200	max. 150	max. 120	max. 120
Rod Thread	mm	T38 / T45	T45 / T51	T51	T51
Number of Blows	bpm	2,800~3,000	2,400~3100	2,300~2,500	2,300~2,500
Reverse percussion	-			Option	

Model		JD-800	JD-800E	JD-1300E	JD-1400E	JD-1500E
YH-70	Application Model	•	•			
	Hole Range	Ø65mm - Ø102mm				
YH-80	Application Model			•		
	Hole Range	Ø65mm - Ø115mm				
YH-135	Application Model				•	
	Hole Range	Ø102mm - Ø127mm				
YH-225	Application Model					•
	Hole Range	Ø102mm - Ø127mm				

• The Structure of YH-70



1. Piston

Direct piston blow enhances the energy efficiency.

2. Valve

Through reciprocating motion of piston, this direct operated valve controls the flow of oil to maintain piston reciprocation.

3. Chuck Bushing

It absorbs a shock on percussion bounce and extend the wear life of parts of drifter.

4. Chuck Driver

Rotation energy is transmitted to chuck from rotation motor.

5. Chuck

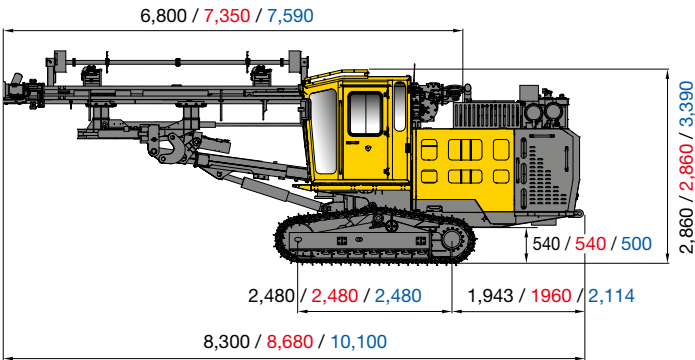
It delivers rotation force to shank adaptor, rod and bit.

6. Blow Tube

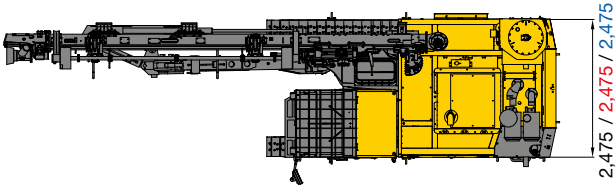
Highly compressed air passes through blow tube to clear chips from the hole.

SOOSANCSM Hydraulic Rock Drill

JD-800 / JD-800E / JD-800EII

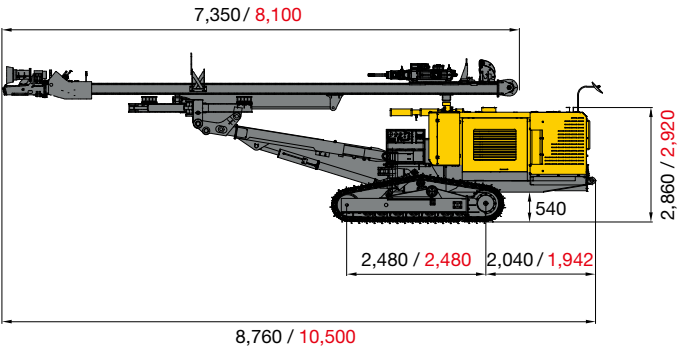


JD-800 / JD-800E / JD-800EII

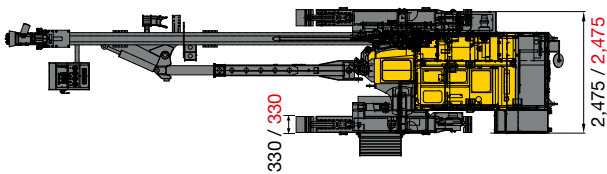


* GrossWeight : 10,850 / 12,000 / 14,800 kg

JD-800ENC / JD-800ENCL

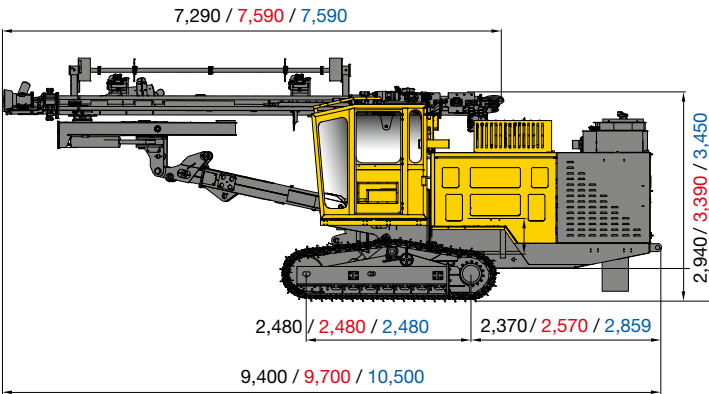


JD-800ENC / JD-800ENCL

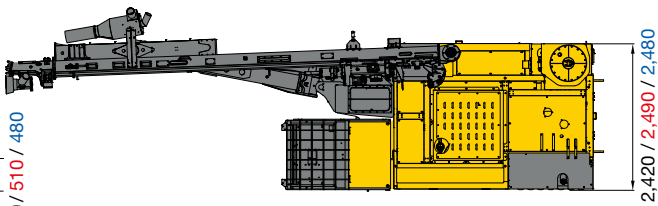


* GrossWeight : 11,700 / 12,800 kg

JD-1300E / JD-1400E / JD-1400EII

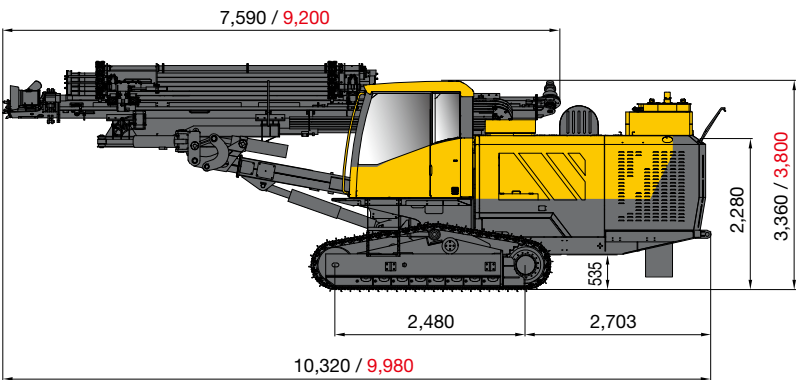


JD-1300E / JD-1400E / JD-1400EII

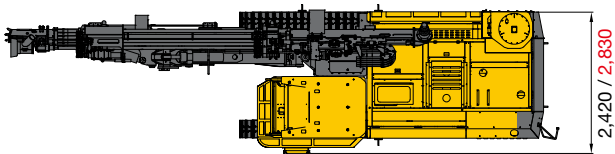


* GrossWeight : 14,700 / 16,000 / 17,000 kg

JD-1500E / JD-1500L



JD-1500E / JD-1500L



* GrossWeight : 17,400 / 17,600 kg

Specifications

GENERAL SPECIFICATION		JD-800	JD-800E (II)	JD-800ENC / L	JD-1300E	JD-1400E (II)	JD-1500E / L
Gross Weight	kg	10,850	12,000 (14,800)	11,700 / 12,800	14,700	16,000 (17,000)	17,400 / 17,600
Overall Length	mm	8,300	8,680 (10,100)	8,760 / 10,500	9,400	9,700 (10,500)	10,320 / 9,980
Overall Width	mm	2,475	2,475	2,475	2,420	2,490 (2,480)	2,420 / 2,830
Overall Height	mm	2,860	2,860 (3,390)	2,860 / 2,920	2,940	3,390 (3,450)	3,360 / 3,800

PERFORMANCE

Hole Range	mm	Ø65 ~ Ø102	Ø65 ~ Ø102	Ø65 ~ Ø102	Ø64 ~ Ø115	Ø102 ~ Ø127 (Ø89 ~ Ø127)	Ø102 ~ Ø127
Drilling Depth	m	15	18	18 / 20	25	25 (28)	25 / 28
Gradeability	°	30	30	30	28	28 (30)	30
Traveling Speed	km / hr	0 ~ 3.8	0 ~ 3.8 (3.3)	0 ~ 3.8	0 ~ 3.5	0 ~ 3.3	0 ~ 3.6

DIESEL ENGINE

Model (CUMMINS)	-	B5.9C	B5.9C - TIER1 (QSB6.7 - TIER4)	B5.9C - TIER1 (QSB6.7 - TIER3)	CTAA8.3-C	QSC8.3, 6C8.3 - TIER1,3 (QSL9 - TIER4)	QSL9
Rated Output	hp/rpm	156 / 2,200 - TIER1	156 / 2,200 - TIER1 (173 / 2,200 - TIER4)	158 / 2,200 - TIER1 (173 / 2,200 - TIER3)	205 / 2,200	260 / 2,200 - TIER1,3 (320 / 2,200 - TIER4)	325 / 1,950

AIR COMPRESSOR

Working Pressure	kg / cm²	10.5	10.5	10.5	10.5	10.5	10.5
Free Air Delivery	m³ / min	5.5	5.5 (6.6)	5.5 / 6.6	8	11.3 (13.9)	14
Tank Capacity	m³	0.051	0.051	0.051	0.051	0.075	0.1

DUST COLLECTOR

Air Pressure	mmAq	550	550	550	550	550	550
Suction Capacity	m³ / min	24	24	24	24	40	40
Number of Filters	ea	4	4	4	4	6	6

BIT & ROD

Rod Length	mm	3,050, 3,660	3,660, 3,050	3,660 / 6,100	3,660	3,660	3,660 / 6,100
Bit Dia	mm	Ø65 ~ Ø102	Ø65 ~ Ø102	Ø65 ~ Ø102	Ø64 ~ Ø115	Ø102 ~ Ø127 (Ø89 ~ Ø127)	Ø102 ~ Ø127
Thread	-	T38 , T45	T38 , T45 (T51)	T38 , T45	T51 (T38 , T45)	T45 , T51	T51

HYD. PUMP

Variable Piston Pump + Gear Pump

GUIDE SHELL

Overall Length	mm	6,800, 7,240	7,350 (7,590)	7,350 / 8,100	7,290	7,590	7,590 / 9,200
Slide Length	mm	1,500	1,500	1,500	1,500	1,500	1,500
Feed Length	mm	3,740, 4,300	4,300	4,260	4,300	4,300	4,570 / 5,090
Swing Angle	L / R°	65 / 50	65 / 50	40/40 / 40/50	90 / 30	90 / 25 (65 / 50)	9/15 / 65/10
Tilt Angle	°	180	180	180	180	152 (180)	152 / 126

BOOM

Overall Length	mm	2,100	2,840	2,100	3,000	3,000	3,000 / 2,870
Lift Angle	Up / Down°	50 / 25	50 / 15	45 / 15	50 / 15	50 / 15	50 / 18
Swing Angle	L / R°	15 / 45	15 / 35 (35 / 25)	40 / 40	25 / 35	35 / 25	17 / 36
Extension Length	mm	-	1,100	1,100	1,100	1,100	900 / -

UNDER CARRIAGE

Lenght of Tumbler	mm	2,480	2,480	2,480	2,480	2,480	2,480
Shoe Width	mm	330	330	330	330	330	330
Ground Clearance	mm	540	540 (500)	540	510	510 (480)	535
Oscillation Angle	°	±11	±11 (+8, -10)	±10	±10	±10	±10

ROD CHANGER

Number of Roods	ea	4+1	4+1	4+1	5+1(6+1)	5+1 (6+1)	6+1
-----------------	----	-----	-----	-----	----------	-----------	-----

• The above specifications can be changed without prior notice.



SOOSAN^{CSM}

- **Head Office & Factory**

#365, Woram-ro, Eumbong-myeon, Asan-si, Chungcheongnam-do, Korea
Tel. 82-41-539-0200 / Fax. 82-41-547-0020

- **Overseas Sales Team**

Tel. 82-41-539-0338 / Fax. 82-41-539-0389
info@soosan.co.kr

- <http://www.soosancsm.co.kr>